

# About Emergency Procedures During a Ballistic Missile Launch

Preventing Injuries Caused by Explosions and Shrapnel

If you receive a J-Alert message,

Remain calm and please act immediately.

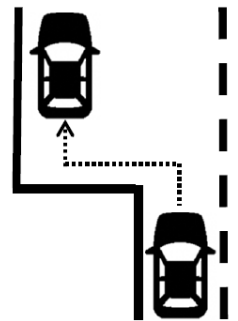
If you are inside:

Get away from windows, or move to a room without windows.



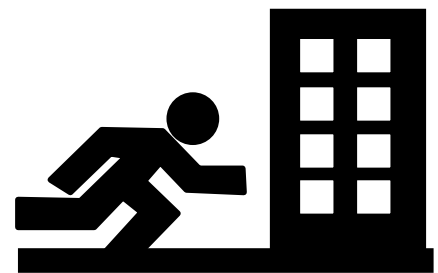
If you are driving:

Stop your car in a safe location and evacuate to the nearest building. Or remain inside the car and keep low.



If you are outside:

Evacuate to the nearest (sturdy) building or basement.



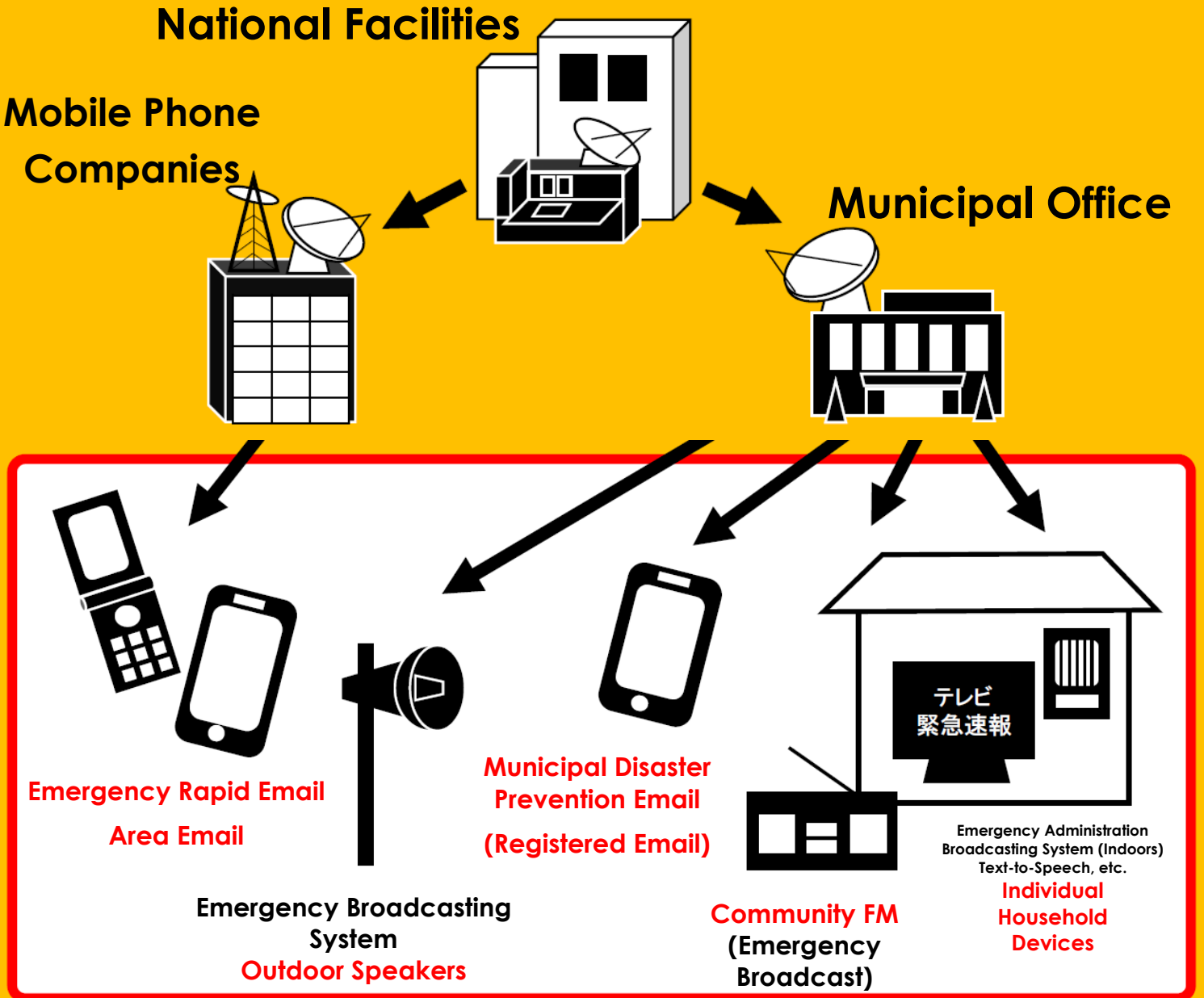
If there are no buildings nearby and you are outside:

Hide your body from surrounding objects, or lie flat on the ground and protect your head.



# About the Flow of Emergency Information Distribution

If there is a possibility that a ballistic missile launched from North Korea will land in Japan, J-Alert will be used to broadcast a message with a special siren sound on the disaster prevention administration broadcasting system or community FM emergency broadcast, as well as an emergency rapid email. Emergency information will be distributed as follows.



● Most mobile phones and smartphones can receive Emergency Rapid Email and Area Email, but some cannot.

Materials created by the Fire and Disaster Management Agency are also posted on the prefectural website, so please take a look at how to check whether your model can receive the alerts and how to deal with them if they cannot.

● The method of receiving emergency information from municipalities differs depending on the municipality, so please contact the municipal office where you live.

# Alerts After a Missile Launches

Depending on the status of the ballistic missile being launched, the following three messages will be received via J-Alert.

## Keywords:

Misairu (ミサイル): missile  
Hassha (発射): launch  
Hinan (避難): evacuate  
Tsuuka (通過): passed over  
Rakka (落下): land

**Missile  
Launched!**

**Confirmation of probability that a ballistic missile will hit Japan.**

## Info About Missile Launch · Calls for Evacuation

### Alert 1

**“A missile has been launched. A missile has been launched.**  
It has been confirmed that a missile has been launched from North Korea.  
Please evacuate into the nearest building or basement.”

**2. When passing  
over Japan.**

**1. When it is confirmed that it will  
hit Japan.**

**3. When landing  
into the sea.**

### Alert 2

**The missile has  
passed over.**

**“Missile passing,  
missile passing.** The  
launched missile has  
been confirmed to have  
passed over  
Japan at (TIME).  
If you find any  
suspicious objects, please  
do not  
approach and  
immediately contact the  
police or fire  
department.”

### Calls for immediate evacuation

**“Evacuate immediately.  
Evacuate immediately. Please  
evacuate to the nearest  
building or basement immediately. It has been  
confirmed that the missile will hit the (PREFECTURE)  
area at approximately (TIME). Please evacuate  
immediately.”**

### Alert 2

### Alert 2

**Information about  
missile landing.**

**“The launched missile  
has been confirmed  
to have landed in the  
sea at (TIME).  
If you find any  
suspicious objects,  
please do not  
approach and  
immediately contact  
the police or fire  
department.”**

### Info About Missile Landing

**“Missile landed. Missile  
landed. It has been confirmed  
that the missile has landed at  
(TIME) in (PREFECTURE & CITY). Please continue to  
remain evacuated indoors until further notice.**

### Alert 3

○Messages will be sent depending on the situation, the above messages may not be the only ones sent.

○The above messages are subject to change depending on the situation.

○ The flow of information transmission may change depending on the situation of missile interception by the Self-Defense Forces.

# Q&A

**Q1. After a ballistic missile has been launched, how many minutes will it take to reach Japan?**

**A1. If North Korea launches a ballistic missile and it will near Japan, it is predicted to take an extremely short amount of time to reach Japan.**

For example, when the ballistic missile was launched on September 15th, 2017, around 10 minutes later, the missile passed over the Hokkaido area and landed about 2,200 kilometers east of Cape Erimo in the Pacific Ocean.

If there is information that a missile will land in an ocean, it isn't necessary to continue to evacuate indoors. However, if you see any suspicious objects, please do not approach it and call the police, fire department, or Japan Coast Guard immediately.

**Q2. Why should I evacuate to a sturdy building or a basement?**

**A2. In order to prevent injuries caused by explosions or flying shrapnel, it is effective to evacuate indoors (preferably a sturdy building) or a basement (or underground tunnel). The prefectural website has published a list of prefectural and municipal facilities that can be used as temporary evacuation shelters even when the office is closed.**

**Q3. Once I evacuate indoors, what are things I should be careful of?**

**A3. In order to prevent injuries as a result of explosions causing windows to shatter, please stay away from windows or move to a room without any windows.**

**Q4. What should I do if I receive a missile alert while driving?**

**A4. Please stop your car in a safe area and evacuate to the nearest (sturdy) building. If there aren't any buildings nearby, exit your vehicle and evacuate to a safe distance. Then lie flat on the ground and protect your head.**

If you are on an express road, highway, etc., and it is dangerous for you to leave your car, stop your car in a safe place and try to remain as low as possible inside of your car while listening for instructions from the government.

**Q5. If I receive an alert reading, "a missile will likely land at (TIME) in (PREFECTURE & CITY).", what should I do?**

**A5. Further updates will be reported. If there are any further instructions from the government, remain calm and act accordingly.**

If a missile lands nearby, the scope of damage and other factors will vary depending on the type of missile, so in order to protect yourself from radiation, poisoning, etc., please do the following.

- If you are outdoors, cover your mouth and nose with a handkerchief, leave the scene immediately, and evacuate to an airtight indoor room or upwind.
- If you are indoors, remain indoors, turn off any air conditioners, and close and seal the windows up.

## Fukushima Prefecture

**【9th Edition】 January 2019**

~Contact Information~

Fukushima Prefectural Crisis Management Division

〒960-8670 Fukushima-ken, Fukushima-shi, Tsugitsuma-cho 2-16

TEL: 024-521-8651

E-Mail: [kikikanri@pref.fukushima.lg.jp](mailto:kikikanri@pref.fukushima.lg.jp)

FUKUSHIMAKEN KIKIKANRIKA

SEARCH: 福島県 危機管理課