

Minamisoma Disaster Information Sharing System

Disaster Prevention Chat Bot

【Manual for Line App Usage】

Starting out...

- The intended use of this application is to allow citizens to provide information using their smartphones about their town situation in the event of a natural disaster such as a typhoon or heavy rains.
- The "town situation" is the situation around you regardless of whether or not damage has occurred.
- The information provided will be published on the Internet, keeping the provider's information anonymous. We will share the information provided with the citizens and Minamisoma City.
- For those that would like to provide information, please confirm that you are in a situation in which it is safe to do so first.
- The purpose of this information is to share the town situation to the citizens at the time of the disaster. **If you have an urgent matter that may affect your physical health or life, be sure to call 119 (fire department).**

Basic Operations

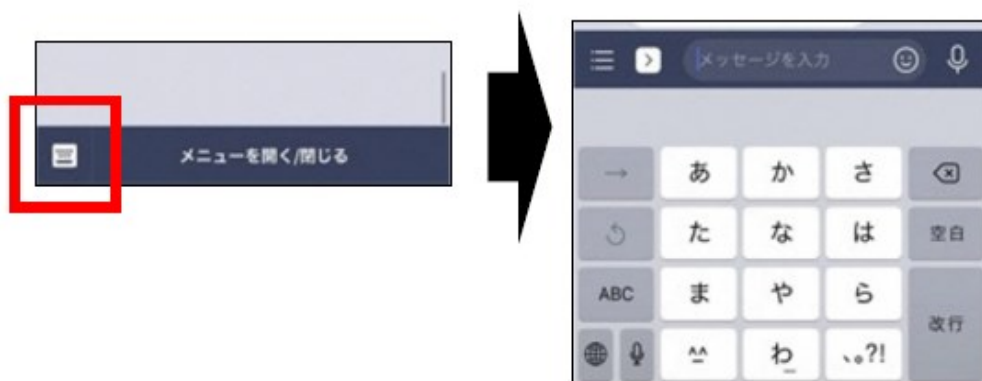
Opening the Menu



The basic operations can all be performed from the menu at the bottom of the screen.

If the menu isn't already displayed, please tap the display/hide menu button (as shown on the left) at the bottom of the screen.

Entering Characters



If typing is required, you can open the keyboard by tapping the keyboard icon in the bottom left corner of your screen.

Friend Registration & Setting Up

Become Friends With the City LINE Account



Using your smartphone, access LINE and use the QR code below to add the city LINE account as your friend.

Agree to the Terms and Conditions



Please read the terms and conditions. You can access them by clicking the link in the message or tapping the terms and conditions button (利用方法) on the bottom of the screen.

After reading the terms and conditions, tap the “agree” button (規約に同意して利用を開始する).

※This content is in development. There may be differences between this and the actual application. There are also situations in which the application may be updated without an advance notice.

Registering Disaster Information

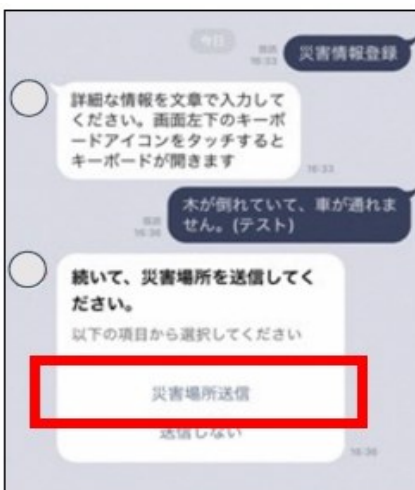
1. Begin Registration, Enter Disaster Information



In order to begin registration, tap the “disaster information registration” button (災害情報登録) from the menu.

Using the keyboard, enter in information about the town situation and damage around you.

2. Enter Location Information



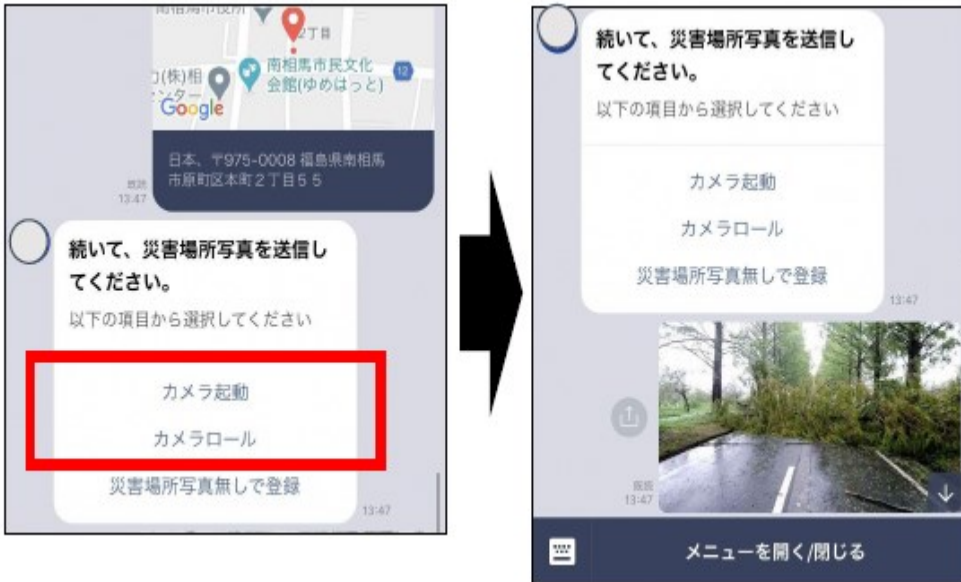
Send your location information.

Tap the “send disaster location” button (災害場所送信) and place down a pin where the damage is located using the “pin location” button (この位置を送信).

※In order to pin your current location, you need to turn on your location setting in your smartphone.

Registering Disaster Information

3. Send Photo of Damages (Optional)



Take a photo of the damages in the area and send the photo. To use the camera tap the “camera” button (カメラ起動). To use a photo from your album, click the “camera roll” button (カメラロール).

※It is necessary to allow this application to use your camera so please be sure to change the settings accordingly when prompted.

4. Check and Confirm Details



Once you send your photo, you will be redirected to the final confirmation screen.

If there are no mistakes, tap the “register disaster information” button (災害情報を登録) and your registration will be completed.

Other Options:

Re-do From Beginning (はじめからやり直す)

End Without Registering (登録せずに終了する)

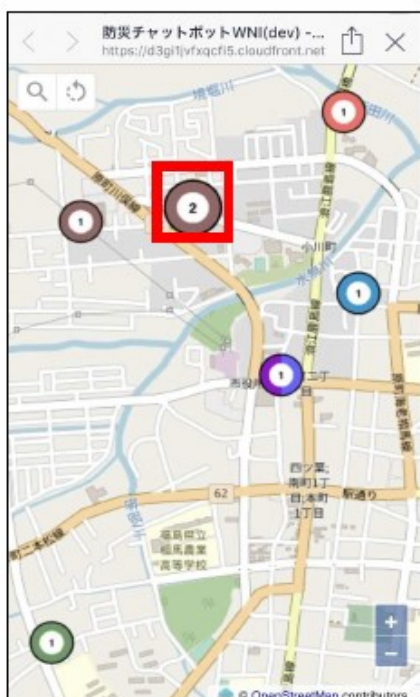
Looking at Reports in the Area

1. Open the Map From the Menu



Select the “look at reports in the area” (周辺の報告を見る) button from the menu. You will now be able to see all the different disaster information reports registered in the area.

Looking at Category Details & Report Lists



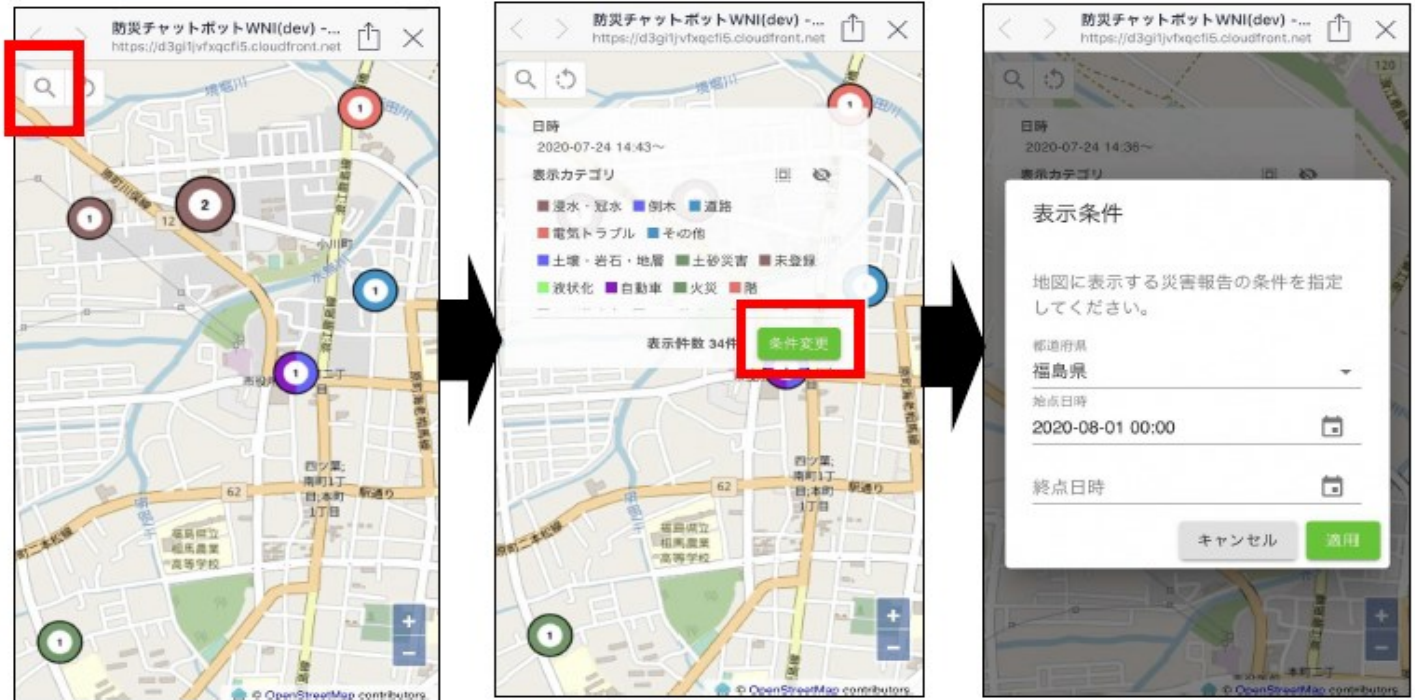
By tapping the numbered circles on the map, you will be able to see the details of the disaster reports.

If you click on the darkened portion of the screen to the left, you will be able to return to the map, hiding the disaster report information.

Looking at Reports in the Area

Narrowing Your Search: Area, Date, Time

By tapping the magnifying glass in the top left corner, you can narrow down your search by type of disaster, location, time, etc.



Narrowing Your Search: Category

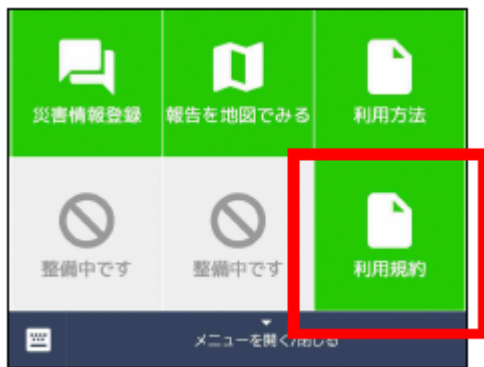


By tapping each category, you can show/hide which information you'd like to display.

※This content is in development. There may be differences between this and the actual application. There are also situations in which the application may be updated without an advance notice.

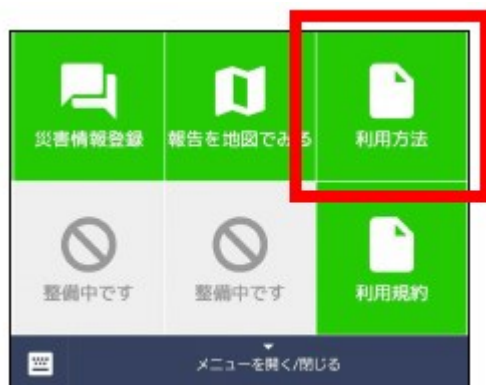
Terms & Conditions, User Manual

Checking Terms and Conditions



You can check the terms and conditions by tapping the “terms and conditions” button (利用規約) on the menu.

Checking the User Manual



You can check the user manual by tapping the “user manual” button (利用方法) on the menu.

In Case of Technical Errors

1. Block the Account



If a technical error occurs, please block the account once.

You can access it by clicking the drop down menu in the top right (as shown on the left) and then tapping “block” (ブロック) afterwards.

2. Unblock the Account



The “block” button will now read “unblock” (ブロック解除). Tap the “unblock” button now.

3. Redo Registration Process



Redo the registration process from the step where you accept the terms and conditions.

If the technical error persists, or you are unsure of something, please contact the department below.

Minamisoma City
Planning Reconstruction Department, Crisis
Management Division
TEL: 0244-24-5232
MAIL: kikikanri@city.minamisoma.lg.jp