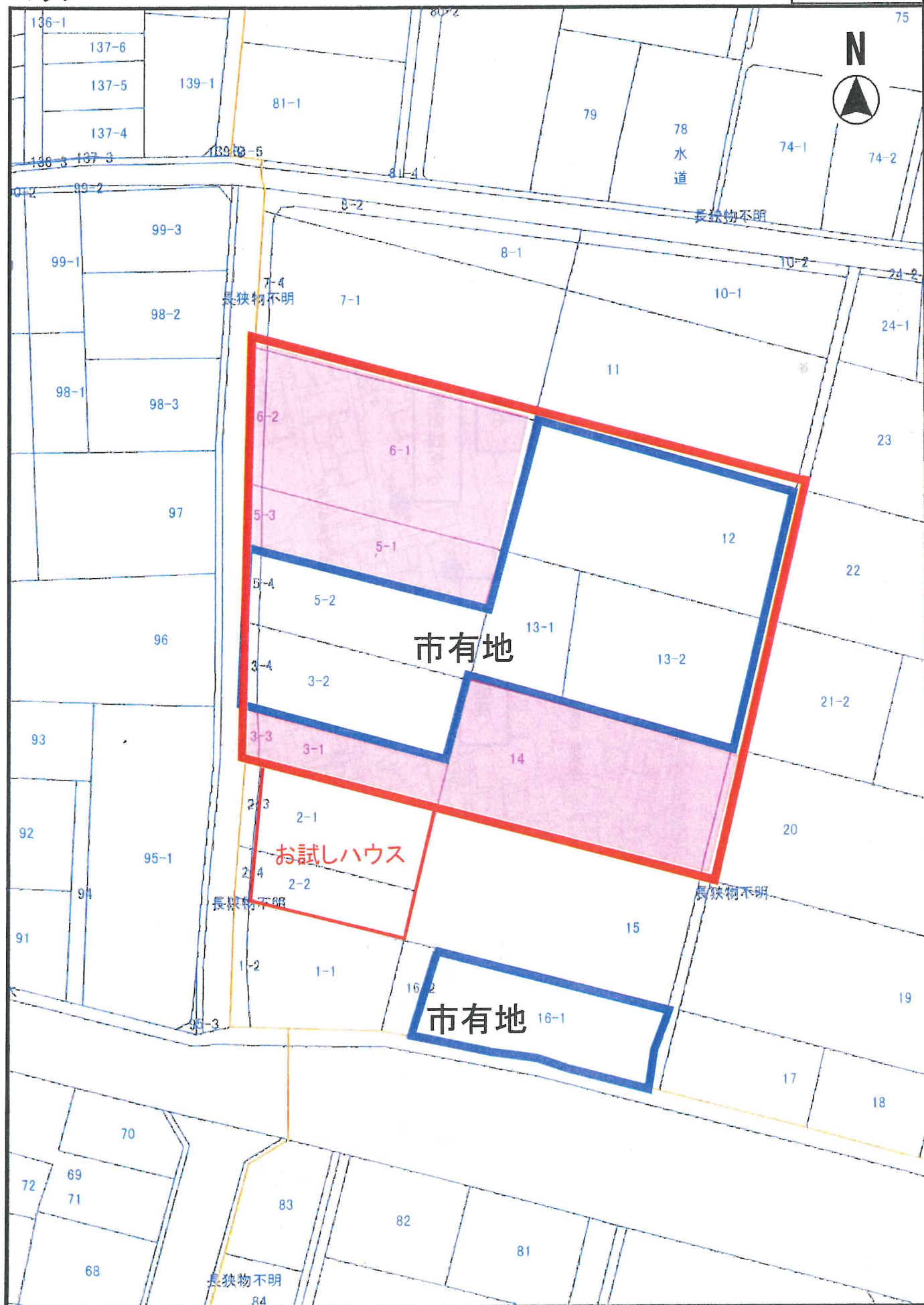


マップ



①旧小高病院跡地

縮尺 1 : 800  
10 5 0 10 20

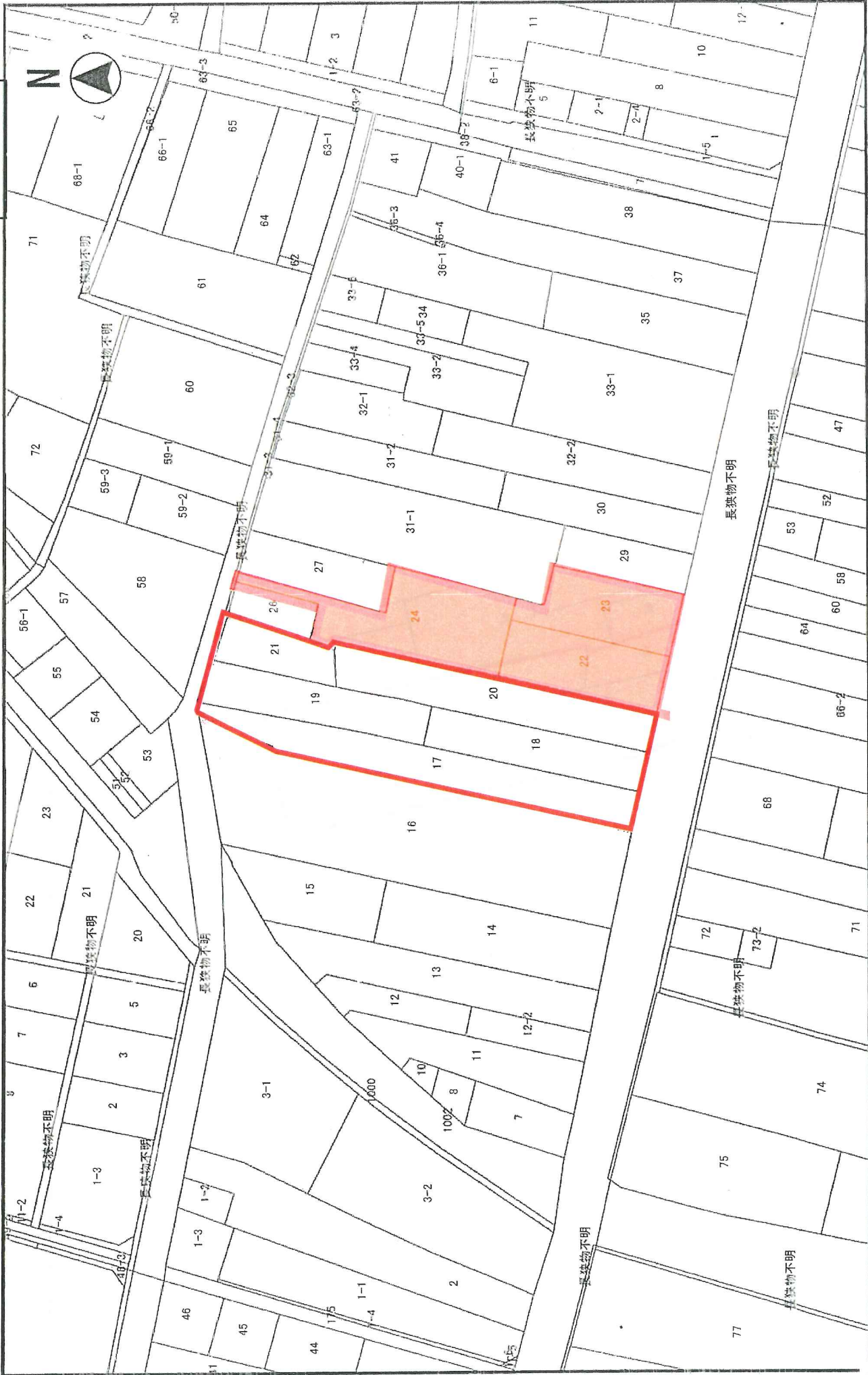
5645.09㎡



②小川医院東側 2165.44㎡

縮尺 1 : 1000

10 5 0 10 20 30 40



③小川医院東側 (間口広め) 3515.15㎡

縮尺 1 : 1000

10 5 0 10 20 30 40