

Minamisoma City: Current Situation and Initiatives for Development



【Editor/Publisher】 Innovation Policy Division, Reconstruction Planning Department, Minamisoma City, Fukushima Prefecture

〒975-8686 Fukushima-ken, Minamisoma-shi, Haramachi-ku, Motomachi 2-27
TEL : 0244-22-2111 (Direct Line)
Mail : innovation@city.minamisoma.lg.jp

About Minamisoma City



Population : 55,376 (Registered as of March 31, 2025)

No. of households : 24,377

Area : 398.58 km²

(Forest: approx. 55%; farmland: approx. 17%*)

- Established on Jan. 1, 2006, via merger of Kashima Town, Haramachi City, and Odaka Town (now Wards of Minamisoma)
- A major city in the Hamadori region located between Iwaki City and Sendai City (Miyagi Prefecture.)



Outline of Minamisoma City



Kitaizumi Beach (Haramachi Ward)

Industry and economy:

This garden city is the largest industrial and economic cluster in the northern Hamadori region. The city aims for the comprehensive economic development of agriculture, commerce, and industry, focusing on the production of rice, electric machinery, general machinery, and paper/pulp.



Broccoli

Minamisoma Rice
"Koshihikari"



Natural conditions:

Moderate climate with an average annual temperature of around 12°C. It is cool in the summer and snows little in the winter. The city is blessed with abundant nature in its mountains, the rivers, and the sea.



Soma Nomaoui



Daihisen Stone Buddhas (Odaka Ward)



Sunrise from Kunimi Mountain

Tourism and culture:

Minamisoma is home to plenty of cultural properties, including the nationally designated Important Intangible Folk Cultural Property *Soma Nomaoui* with its history of over 1,000 years. The coastal area is a good spot for swimming and surfing, with activities centered around Kitaizumi Seaside Park.



Wind Farm and Mano River Fishing Harbor
(Kashima Ward)

Fukushima Nuclear Disaster: Main Series of Events①

Date and Time		Event
March 11, 2011	14:46	Earthquake measured at 6- (seismic intensity scale) in Minamisoma
	Approx. 15:35	Tsunami reaches land (Kashima Coast: reached 20.8m upstream)
March 12	5:44	Evacuation order declared for all residents within a 10km radius of the Fukushima Daiichi Nuclear Power Plant Station
	15:36	Hydrogen explosion in power plant unit 1 Suppliers unable to enter the area due to the nuclear accident; shortage in daily necessities
	18:25	Evacuation order expanded to residents within a 20km radius of the power plant Odaka residents evacuate to Haramachi (many went to the Ishigami area evacuation site)
March 14	11:01	Hydrogen explosion in power plant unit 3 atomic reactor room
	18:22	Insufficient coolant in power plant unit 2, fuel rod completely exposed Chaos from aftershocks on March 14 and the hydrogen explosion along with insufficient supplies led to the start of evacuating the entire city
March 15	11:00	Those in a 20-30km radius of the power plant ordered to shelter indoors
March 15-17		City-orchestrated buses take people from city evacuation sites to evacuation sites outside the city (1,939 people)
March 16	5:45	Fire started to the northwest of power plant unit 4
	8:34	Large amounts of white smoke spout from power plant unit 3
March 18-20		City-orchestrated buses initiate mass evacuations (2,725 people)
March 25		City-orchestrated buses initiate mass evacuations (142 people)



[Tsunami]



[Tsunami damages]



[JSDF disaster relief]



[Evac site (Yume Hatto)]



[Mass evacuation]

Fukushima Nuclear Disaster: Main Series of Events②

Date and Time		Event
April 21, 2011	11:00	Area within 20km radius of the power plant declared hazard zone (starting April 22, 0:00)
April 22	9:44	Shelter-indoors order for area in 20-30km radius from power plant cancelled; set as planned evacuation zone and emergency evacuation prepared zone
July 21	12:30	57 sites (59 households) set as special evacuation-recommended sites
August 3	12:00	65 sites (72 households) added as special evacuation-recommended sites
Sept. 30	18:11	Emergency evacuation prepared zone cancelled
Nov. 25	10:00	20 sites (22 households) added as special evacuation-recommended sites
April 16, 2012	0:00	Hazard zone and planned evacuation zone reevaluated as preparation area for lift of evacuation orders, restricted-residence zone, and difficult-to-return zone
Dec. 28, 2014	0:00	Specific Spots Recommended for Evacuation cancelled
July 12, 2016	0:00	Preparation area for lift of evacuation orders and restricted-residence zone cancelled



[Hazard zone 4/21/2011]



[Screening test 5/7/2011]

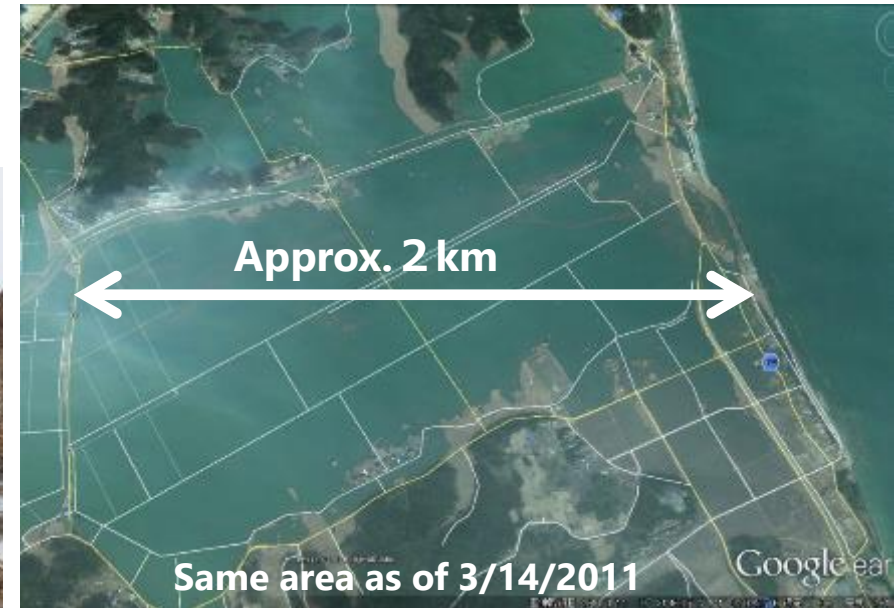


[Removing guide signs 4/16/2012]



[Odaka Station ceremony for lifting evac. orders 7/12/2016]

Damage from the Tsunami



Damage by 3.11 (1) [Tsunami]

【Tsunami-damaged area】

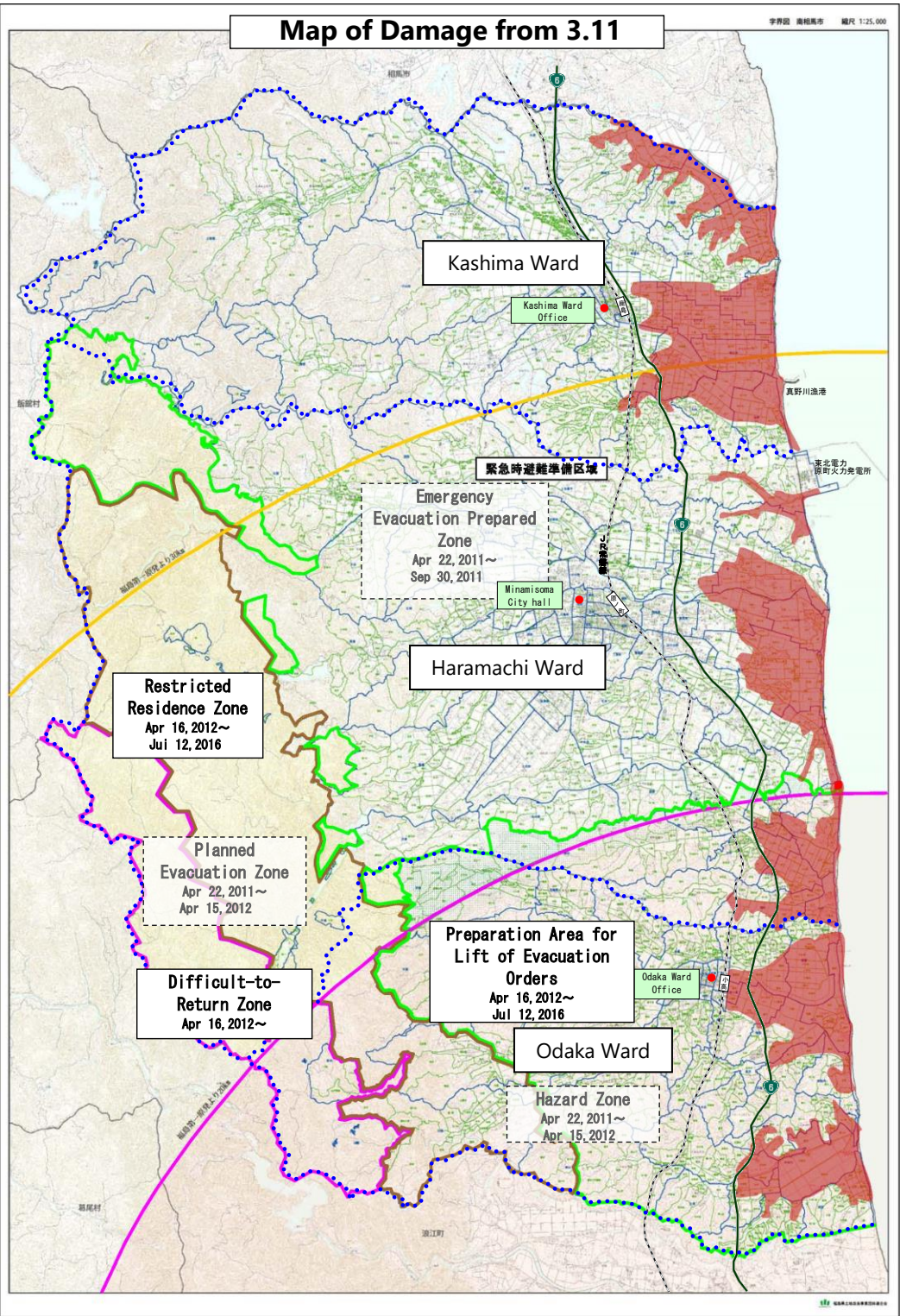
Ward	District	Area
Kashima Ward	Yasawa	5.0 k m ²
	Minamiebi - Karasuzaki	10.8 k m ²
	Subtotal	15.8 k m ²
Haramachi Ward	Kanezawa・Kitaizumi	1.6 k m ²
	Izumi - Shidoke	9.1 k m ²
	Kobama - Kozawa	3.8 k m ²
	Subtotal	14.5 k m ²
Odaka Ward	Tsukabara - Tsunobeuchi	5.6 k m ²
	Idagawa - Urajiri	4.9 k m ²
	Subtotal	10.5 k m ²
Total		40.8 k m ²

【Tsunami damage to farmland】

The tsunami caused devastating damage, and approximately 30% of the arable land in the city was washed out or submerged. Many facilities were damaged, including drainage pump stations, reservoirs, drainage canals and farm roads.

Area of arable land (2010)	Farmland washout, submergence, etc.		Estimated damaged area based on field type	
	Estimated damaged area	Rate of damaged area	Rice field	Crop field
8,400ha	2,722ha	32.40%	2,642ha	80ha

Made from documents published by Ministry of Agriculture, Forestry and Fisheries Minister Secretariat, Statistics Department, Rural Development Office



Damage by 3.11(2) [Personal and Housing Damage]

【Personal Damage】 (As of March 31, 2025)

(Unit: person)

Death	1,157
(Directly caused death)	636
(Disaster-related death)	520
Missing*	0
Injured	59
(Severely injured)	2
(Slightly injured)	57

*Those presumed dead are not included among the missing.



Search operation



Piles of rubble (Haramachi Ward)



A coastal community
(Kashima Ward)



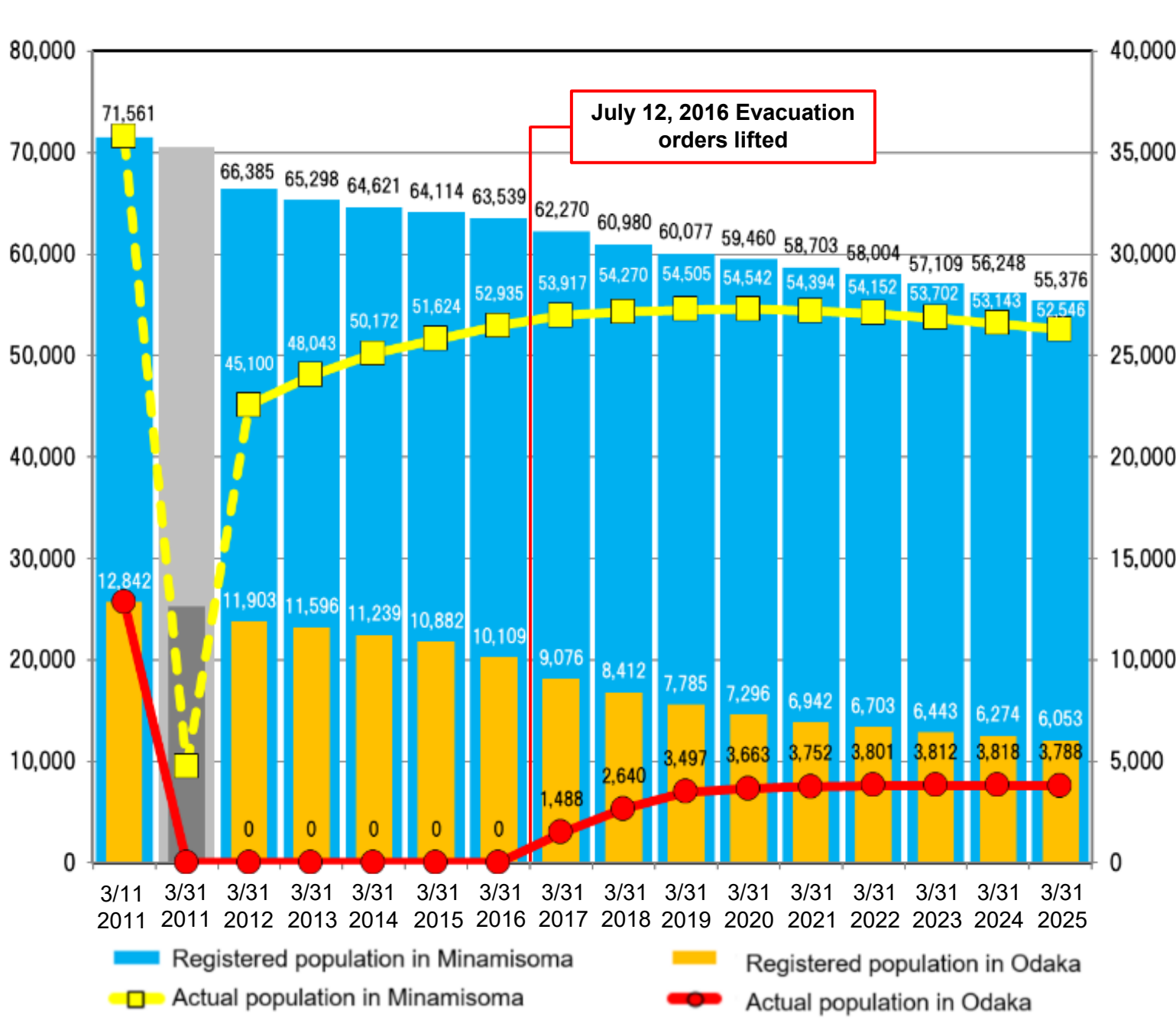
Many buildings were totally or
partially destroyed (Odaka Ward)

【Housing Damage】 (As of March 31, 2025)

(Unit: household)

Ward	Total no. of households	No. of damaged households	Completely destroyed		Largely destroyed		Partially destroyed		Partial damage	
			Tsunami	Earthquake	Tsunami	Earthquake	Tsunami	Earthquake	Tsunami	Earthquake
Odaka Ward	3,771	2,234	319	89	34	62	66	837	35	792
Kashima Ward	3,460	1,051	411	18	14	19	43	66	31	449
Haramachi Ward	16,667	2,027	434	6	35	14	62	116	31	1,329
Total	23,898	5,312	1,164	113	83	95	171	1,019	97	2,570

Current Situation [Changes in Registered and Actual Populations]



(Unit: person)

Population in Resident Register

Date	Minamisoma	Odaka Ward
3/11/2011	71,561	12,842
3/31/2012	66,385	11,903
3/31/2013	65,298	11,596
3/31/2014	64,621	11,239
3/31/2015	64,114	10,882
3/31/2016	63,539	10,109
3/31/2017	62,270	9,076
3/31/2018	60,980	8,412
3/31/2019	60,077	7,785
3/31/2020	59,460	7,296
3/31/2021	58,703	6,942
3/31/2022	58,004	6,703
3/31/2023	57,109	6,443
3/31/2024	56,248	6,274
3/31/2025	55,376	6,053

Actual Population

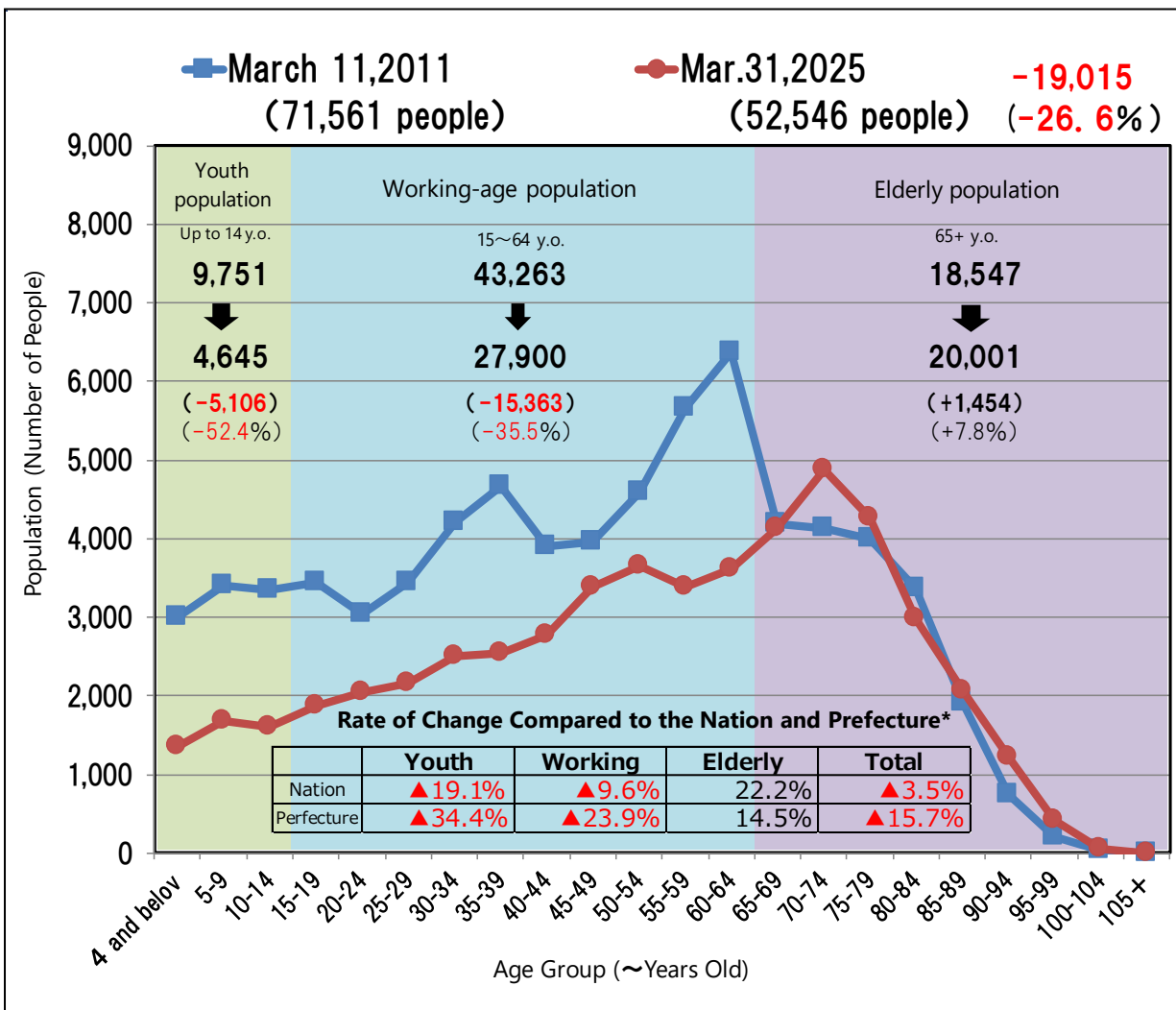
Date	Minamisoma	Odaka Ward
3/11/2011	71,561	12,842
3/31/2012	45,100	0
3/31/2013	48,043	0
3/31/2014	50,172	0
3/31/2015	51,624	0
3/31/2016	52,935	0
3/31/2017	53,917	1,488
3/31/2018	54,270	2,640
3/31/2019	54,505	3,497
3/31/2020	54,542	3,663
3/31/2021	54,394	3,752
3/31/2022	54,152	3,801
3/31/2023	53,702	3,812
3/31/2024	53,143	3,818
3/31/2025	52,546	3,788

*Actual population numbers calculated based on evacuee information.

Current Situation

[Comparing the City's Pre-Disaster Population to Now]

【Population of Entire City】



The working-age population has fallen by around 15,000 people compared to before the earthquake (around 30%), leading to a chronic labor shortage

• Operations at commercial, industrial, medical, and welfare institutions have not returned to their pre-disaster levels

*Compared to national and prefectural estimates as of March 31, 2025.

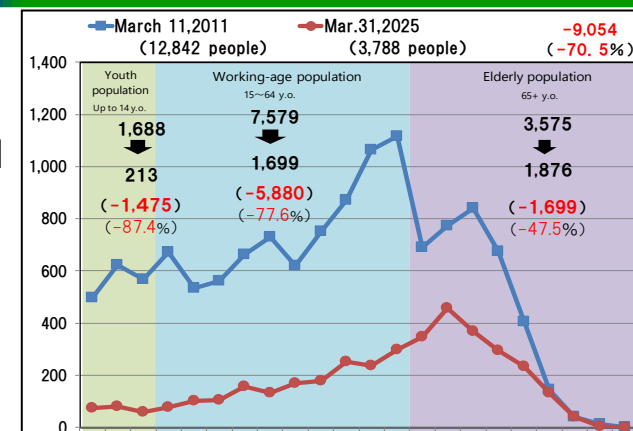
Modified and used "Population Estimates" (Statistics Bureau) (<https://www.stat.go.jp/data/jinsui/pdf/202503.pdf>),

and Fukushima population census by age (5 tiers), creative commons license 2.1 Japan (<https://www.pref.fukushima.lg.jp/sec/11045b/15846.html>).

Working-age population by ward

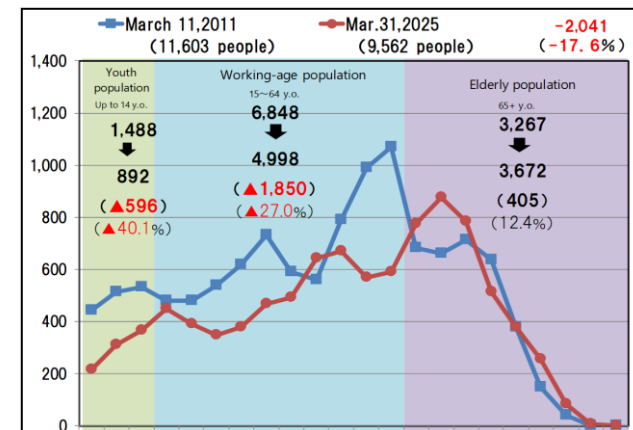
【Odaka Ward】

7,579
↓
1,699
(-5,880)
(-77.6%)



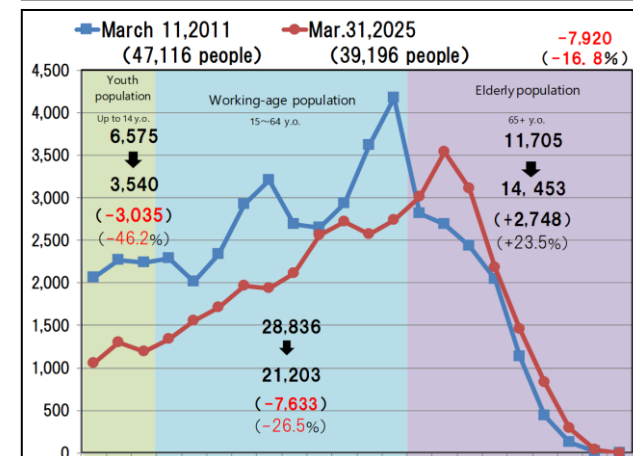
【Kashima Ward】

6,848
↓
4,998
(-1,850)
(-27.0%)



【Haramachi Ward】

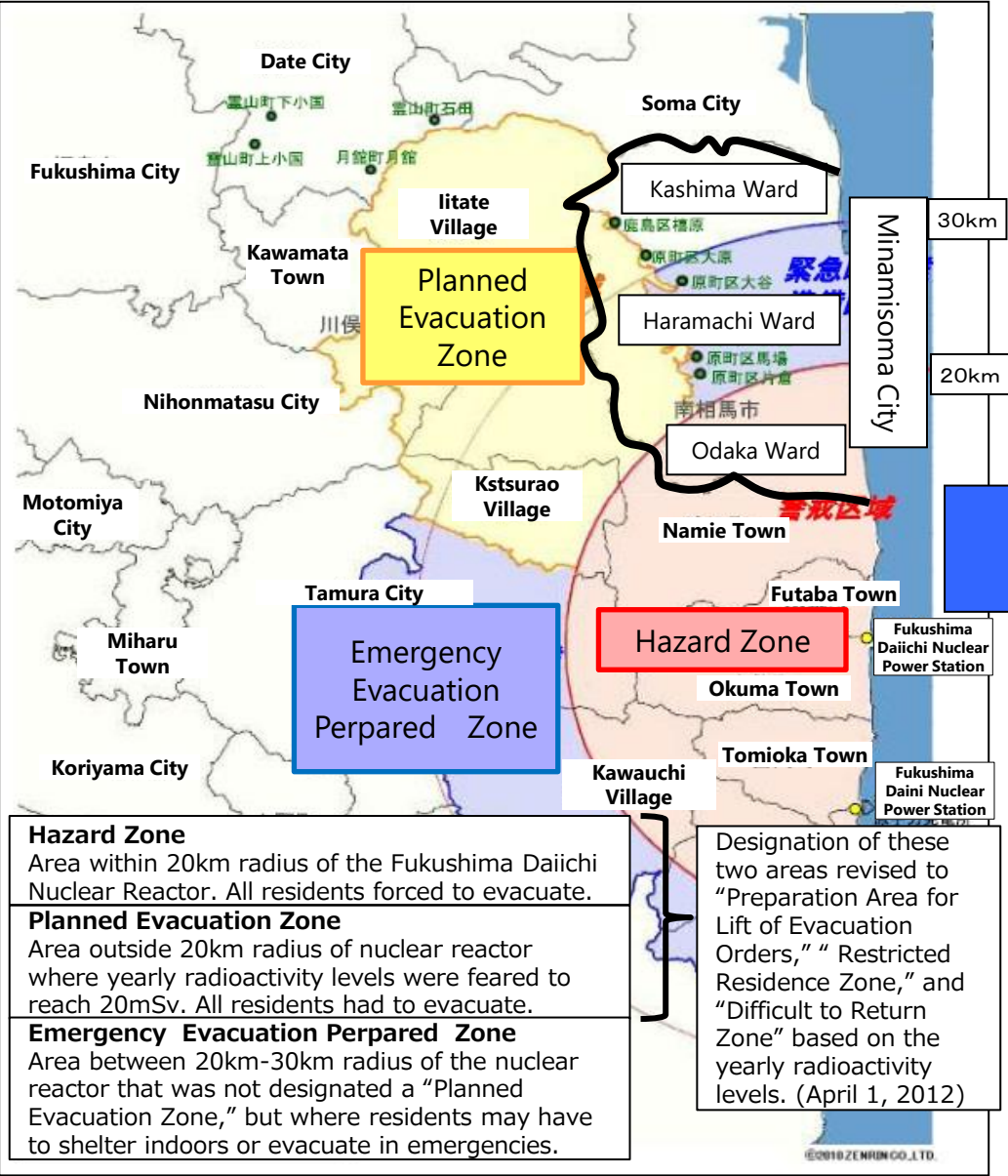
28,836
↓
21,203
(-7,633)
(-26.5%)



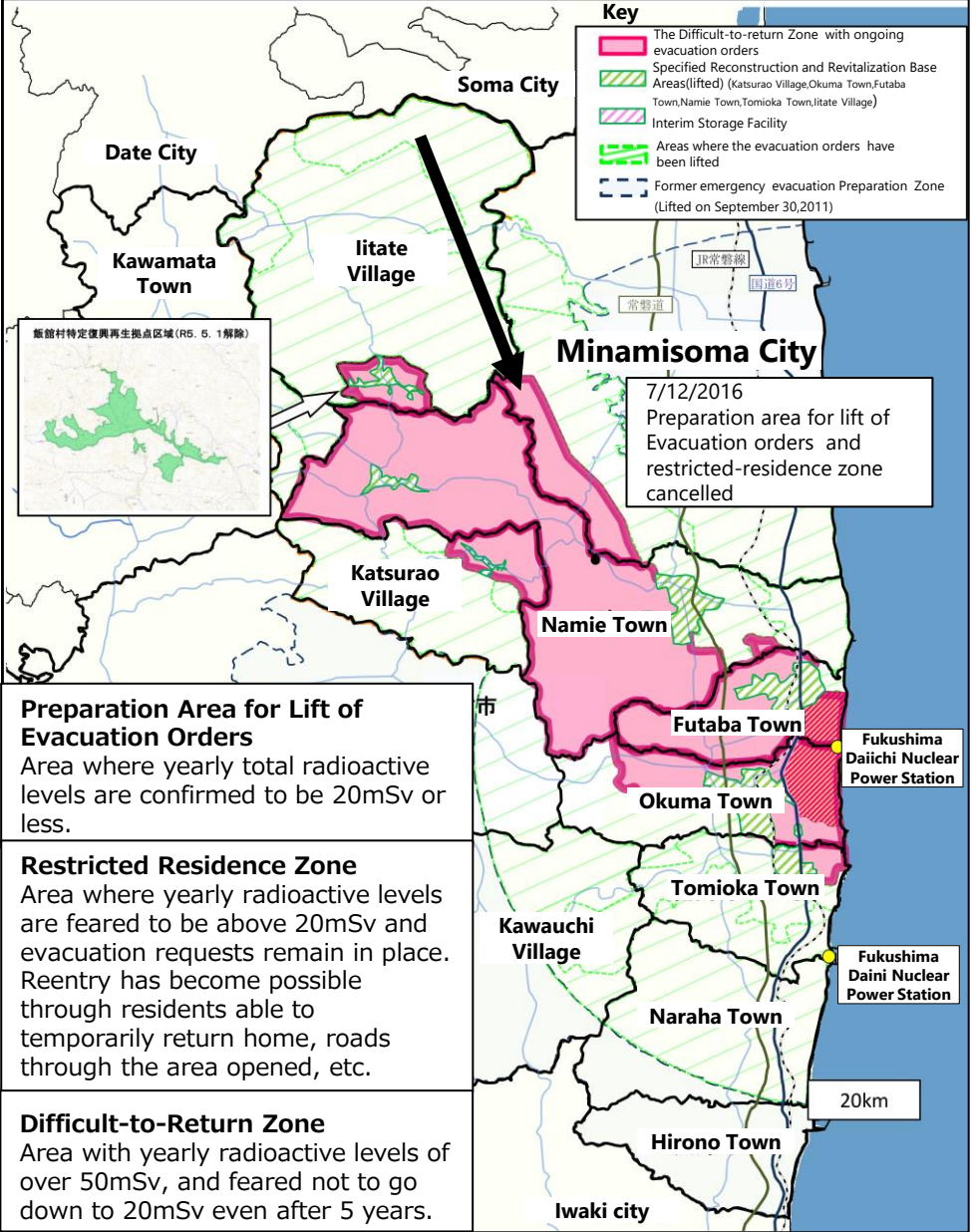
Reevaluating Minamisoma's Areas Post-Disaster



Post-Disaster Zone (September 2011)



July 12, 2016 Lifting Evacuation Orders



【Implementation Status of Decontamination】

【Residential Land and Farmland Decontamination】

Minamisoma City and the national government completed their decontamination plan in March 2017, as shown in the map to the right.

Decontamination Zones

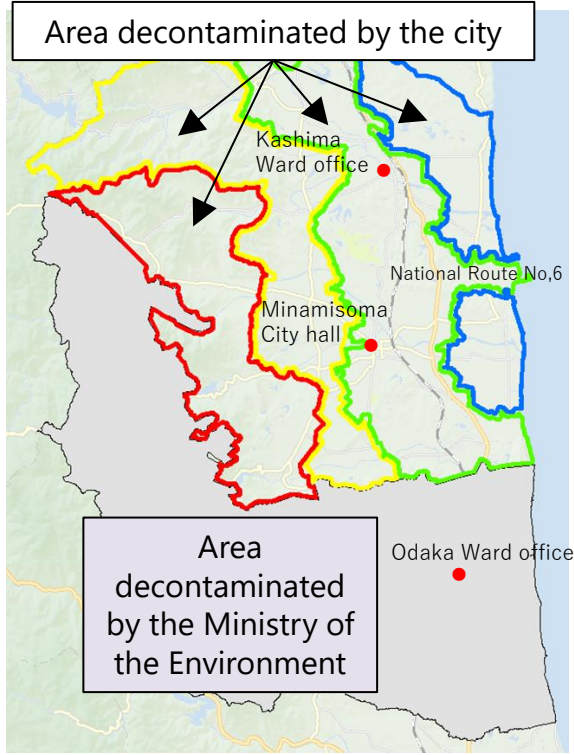
Area that includes "specific Spots Recommended for Evacuation"

Area that includes spots with annual doses of over 5 mSv

West of Route 6

East of Route 6

*Outside 20km radius



Residential land

Cleaning and washing gutters

Pressure washing roofs

Pressure washing garden pavement and side ditches

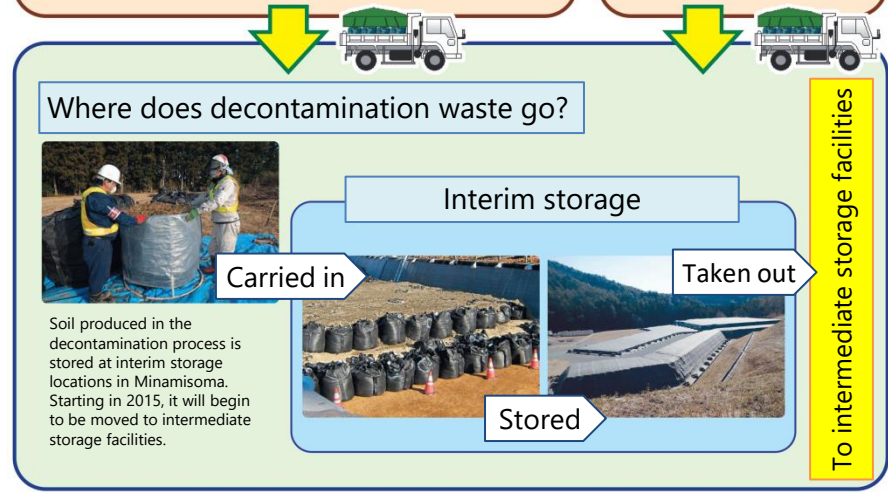
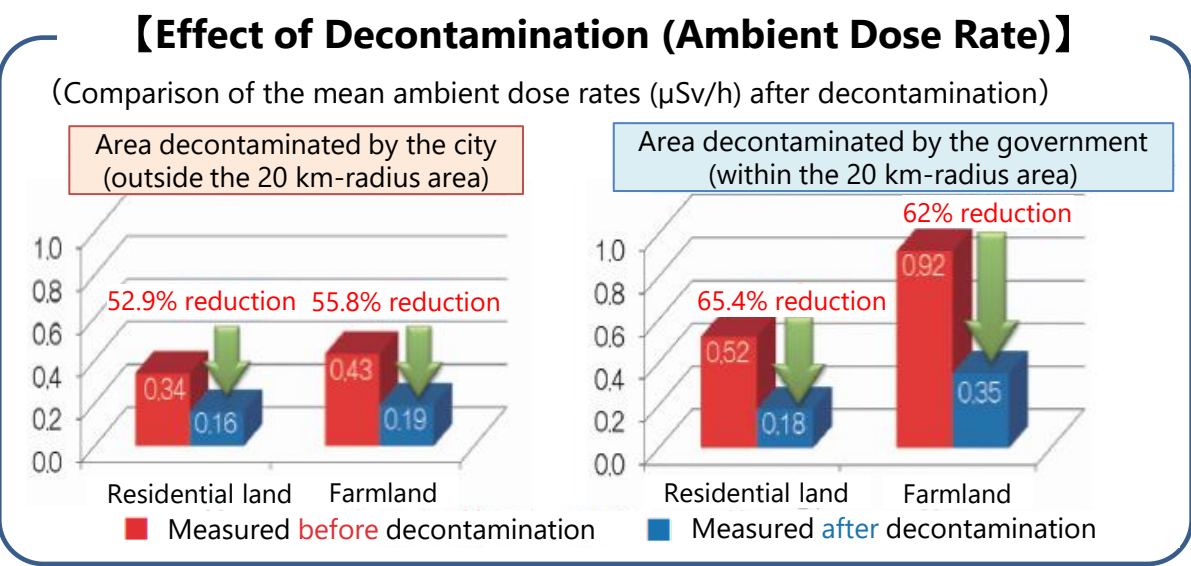
Surface soil/gravel removal and refilling in gardens

Farmland

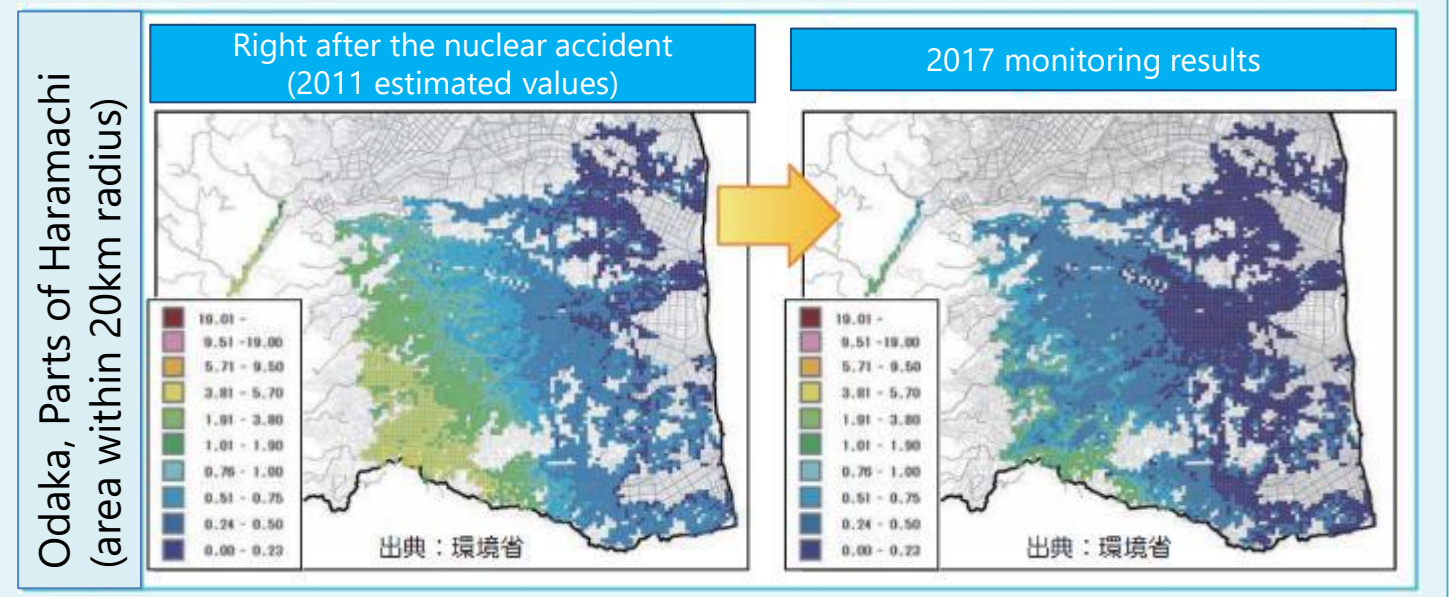
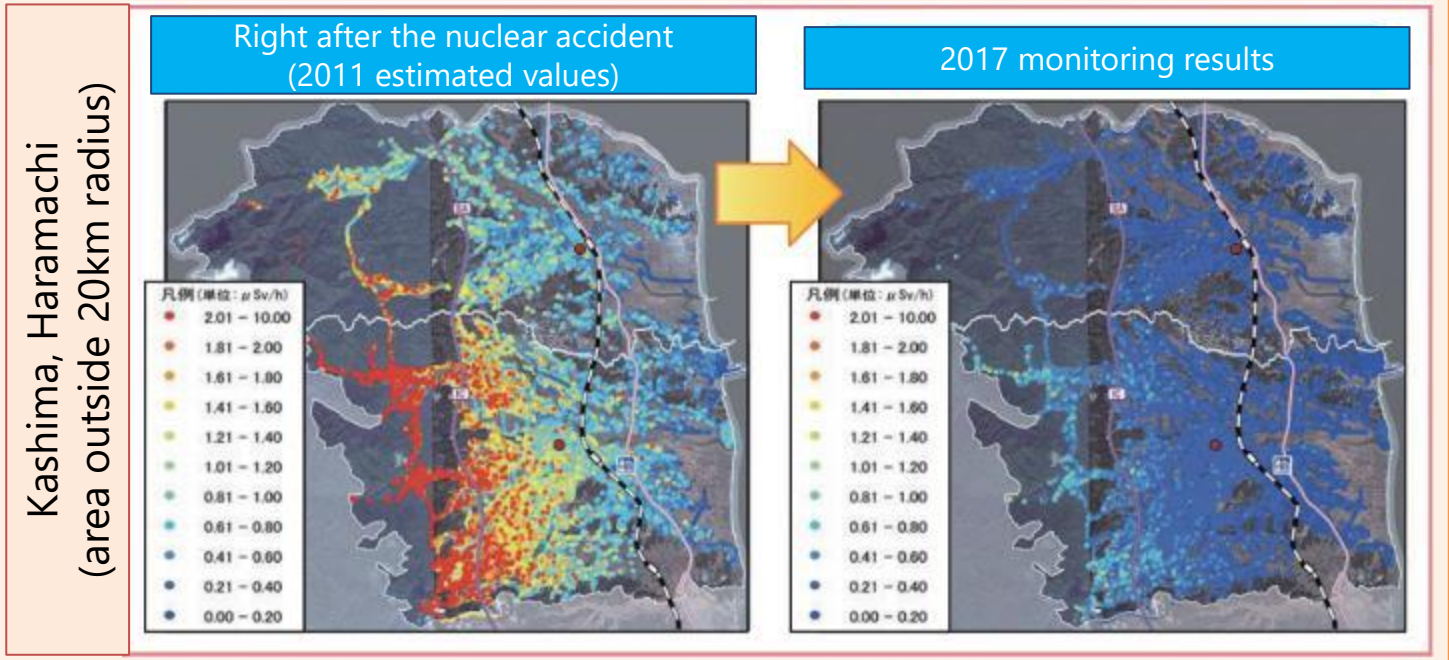
Surface soil removal and soil dressing

Deep/reversal tillage

Sediment removal in agricultural canals



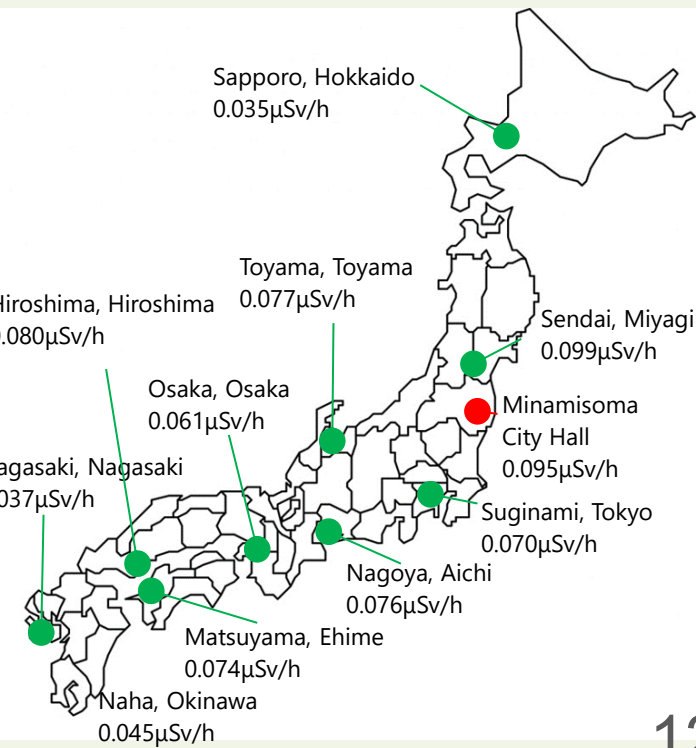
【Changes in Ambient Dose Rates】 Deep blue areas have become wider, which means the ambient dose rate is decreasing. Post-contamination environmental recovery is in progress.



【Comparison of Ambient Dose Rates (March 2025)】

No major difference was discovered in a comparison between ambient dose rates in Minamisoma and those in municipalities across Japan.

March 2025 (Suginami Ward's value is from Feb.)
Approx. values from 1m above ground or 1m height
Source: Nuclear Regulation Authority
Radiation monitoring information
Municipal websites



Municipality	Dose Rate (μSv/h)
Sapporo, Hokkaido	0.035
Toyama, Toyama	0.077
Hiroshima, Hiroshima	0.080
Sendai, Miyagi	0.099
Minamisoma City Hall	0.095
Suginami, Tokyo	0.070
Nagoya, Aichi	0.076
Matsuyama, Ehime	0.074
Naha, Okinawa	0.045
Nagasaki, Nagasaki	0.037
Osaka, Osaka	0.061

Current Situation [Medical Care]

【Medical Institutions】

(As of Mar. 31, 2025)

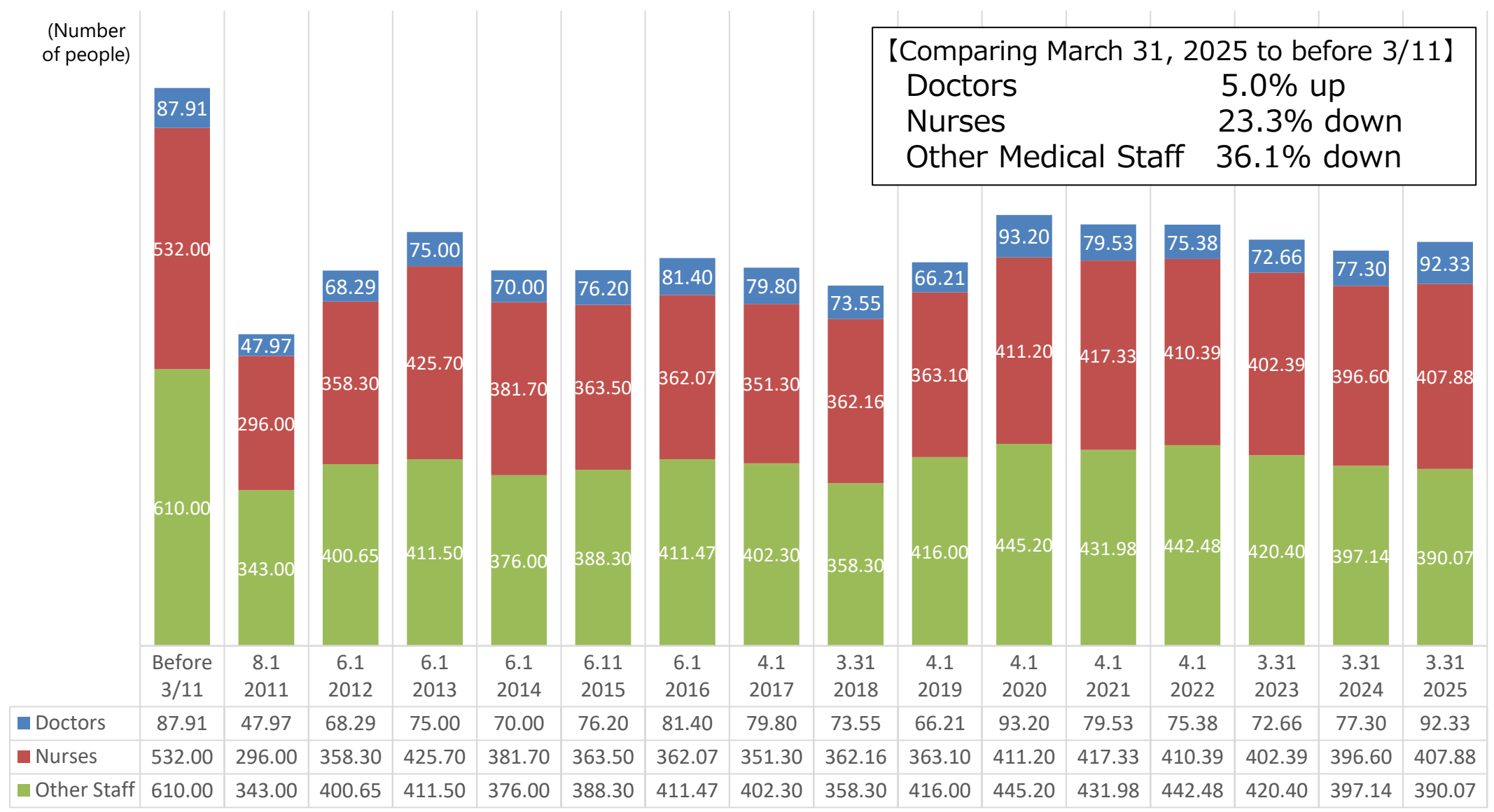
Type of Institution			Before 3/11	After 3/11			Now in Operation
				New/Expanded	Suspended	Closed	
Hospital	No. of institutions		8	—	1	2	5
	No. of beds	General	695	40	155	272	308
		Long-term care	276	60	50	142	144
		Psychiatric	358	—	298	—	60
	Total		1,329	100	503	414	512

【Hospital and Clinics】

Type of Institution			Before 3/11	After 3/11			Now in Operation
				New/Reopened	Suspended	Closed	
Clinics	No. of beds	Odaka Ward	7	1/(3)	3	1	4
		Kashima Ward	3	2	—	2	3
		Haramachi Ward	29	6/(1)	—	9	26
	Total		39	9/(4)	3	12	33
Dental Clinics	No. of beds	Odaka Ward	5	1	0	5	1
		Kashima Ward	5	—	1	—	4
		Haramachi Ward	23	1	1	5	18
	Total		33	2	2	10	23

※Numbers in parentheses were reopened, and thus not included in the total.

Current Situation [Changes in Number of Medical Staff]



*Equivalent number of doctors and nurses calculated by converting the total actual workload into the number of full-time workers that would reach that workload (Percentage of fully-employed doctors as of 2025/3/31: 70.4%)

【People Requiring Help and Long-Term Care】 (As of March 31, 2025)

	Requiring help level 1	Requiring help level 2	Long-term care level 1	Long-term care level 2	Long-term care level 3	Long-term care level 4	Long-term care level 5	Total
End of Feb. 2011	262	328	360	461	348	535	467	2,761
End of March 2025	605	601	650	520	464	557	317	3,714
Increase/Decrease	343	273	290	59	116	22	-150	953

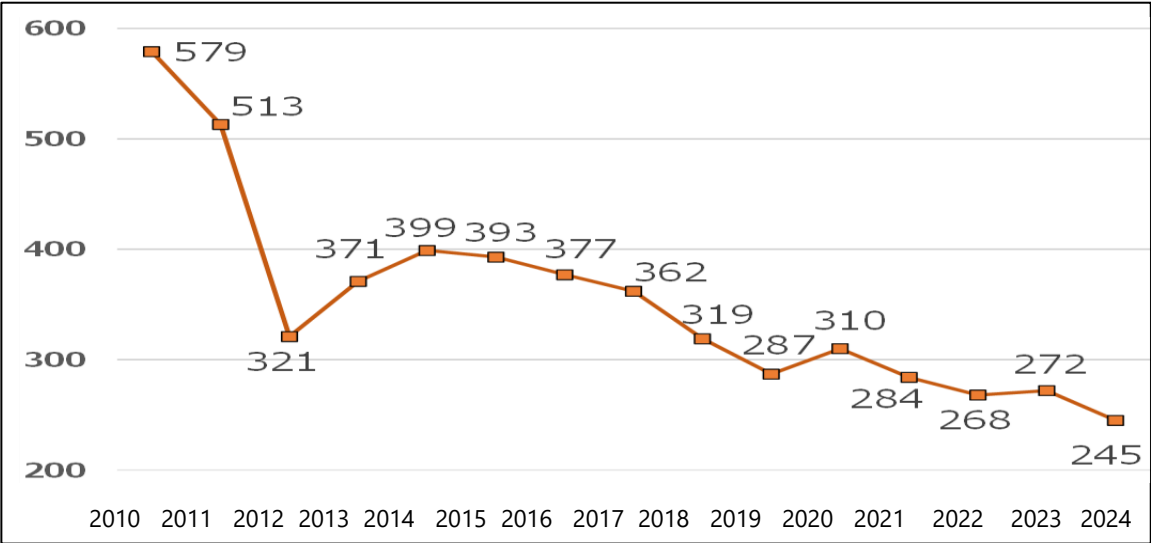
【Nursing Facilities (Nursing Home Services)】 (As of March 31, 2025)

Type of Institution		Before 3/11	After 3/11			Operational Facilities	Actual Operation
			New/Expanded	Suspended	Closed		
Nursing Care Facility for the Elderly (Specialized Nursing Home)	No of facilities	5	—	—	—	5	—
	no of beds	300	85	—	—	385	365
Nursing and Rehabilitation Facility (Nursing and Rehab Facility for the Elderly)	No of facilities	3	—	—	—	3	—
	no of beds	258	42	40	—	260	240
Nursing Care-Type Medical Facility	No of facilities	0	1	—	—	1	—
	no of beds	0	53	—	—	53	53
Dementia-Friendly Communal Living Care (Group Home for the Elderly with Dementia)	No of facilities	5	2	—	1	6	—
	no of beds	81	36	—	18	99	99
Long-Term Care Health Facility (*The Long-Term Care Insurance System basis repealed March 2024)	No of facilities	2	—	—	2	—	—
	no of beds	31	—	—	31	—	—
Total	No of facilities	15	3	0	3	15	—
	no of beds	670	216	40	49	797	757
Nusing care facilities (Home Services) Total	No of facilities	81	44	1	44	80	
	no of beds						

Current Situation [Birth Rates and Children's Facilities]



【Birth Rates】 (As of December 31, 2024)



Birth rates dramatically decreased directly after the 3/11 disaster. For a while they were on an upward trajectory, but afterwards have been gradually decreasing, leading to a lower birth rate now than directly after the disaster.

There were 27 children's facilities such as preschools and kindergartens open before the disaster, but directly following it 15 facilities suspended activity or closed, and the number of students fell by roughly 40%.

~2019 values: "Fukushima Prefecture Current Population Census"; 2020~ values: civic affairs division tally

【Number of Facilities and Students】 (As of March 31, 2025)

Type of Facility		Before 3/11	After 3/11			Operational Facilities
			New/Expanded	Suspended	Closed	
Certified Childcare Center	No. of Facilities	—	2 ^{※1}	—	—	2
	No. of Students	—	—	—	—	182
Preschool	No. of Facilities	10	1	1	3 ^{※1}	7
	No. of Students	1,142	—	—	—	640
Kindergarten	No. of Facilities	17	—	5	6	6
	No. of Students	1,198	—	—	—	469
Small-Scale Preschool	No. of Facilities	—	4	—	—	4
	No. of Students	—	—	—	—	64
Total	No. of Facilities	27	7 ^{※1}	6	9 ^{※1}	19
	No. of Students	2,340 ^{※2}	—	—	—	1,355 ^{※3}

※1 Including 1 preschool that became a certified childcare center.
※2 Number had that planned to enter in April 2011.
※3 Including children taken in from municipalities designated in the nuclear evacuee exemption law.

Current Situation [School Education]

【Number of enrollments】

(As of Apr. 4, 2025)

Ward		Expected (2011)	Actual (Apr.22,2011)		Actual (Apr.4,2025)
		A	B	B/A	
Elementary School	Haramachi	2,716	786	29%	1,629
	Kashima	625	402	64%	399
	Odaka	717	43	6%	98
	計	4,058	1,231	30%	2,126
Junior High School	Haramachi	1,295	555	43%	704
	Kashima	324	238	73%	224
	Odaka	324	52	15%	29
	計	1,963	845	43%	957
合計		6,021	2,076	34%	3,083

(Unit: person)

- 3/11/2011 The Great East Japan Earthquake
Mano ES suffered damage from the great tsunami.
- 4/22/2011 ES and JHS resumed classes (using ES buildings in Kashima Ward).
- 8/25/2011 Simple unit-type classrooms established on the premises of ES and JHS in Kashima Ward
- 10/17/2011 ES and JHS in Haramachi Ward resumed classes in original locations (Haramachi 1st and 3rd ES, Omika ES, Haramachi 1st and 2nd JHS).
- 11/21/2011 Temporary school buildings established and offered (Kashima ES and Kashima JHS)
- 1/10/2012 ES in Haramachi Ward resumed classes in original locations (Haramachi 2nd ES, Takahira ES, Ota ES)
- 2/27/2012 ES and JHS in Haramachi Ward resumed classes in original locations (Ishigami 1st and 2nd ES, Haramachi 3rd JHS, Ishigami JHS)
- 4/1/2014 Mano ES integrated into Kashima ES
- 4/1/2016 4 Elementary schools in Odaka Ward started joint operation.
- 4/1/2017 Odaka ES and Odaka JHS resumed classes in original locations.
- 4/1/2021 Odaka's 4 ES (Odaka, Fuku-Ura, Kanabusa, Hatsupara) unified and reopened as Odaka ES
- 4/1/2024 Yasawa ES merges with Kashima Elementary School



Classes in a gymnasium
(Apr. 22, 2011)



4 schools in Haramachi Ward reopened, thus all schools in Haramachi Ward have resumed classes.
(Feb. 27, 2012)



Temporary school building for special needs education established within the temporary Kashima JHS building
(Mar. 27, 2013)



Closing ceremony for Odaka Ward's 4 elementary schools
(Apr. 1 2021)

Current Situation [Primary Industry]

【Recovery Situation of Tsunami-Damaged Farmland (Construction Area)】

Out of the 2,722 hectares of farmland damaged by the tsunami, 2,111 hectares had been recovered for farming by 2024. Recovery of 2,150 hectares of farmland is planned in the 2025 fiscal year.

Area of tsunami-damaged farmland	Total (including planned areas)	Area of recovered farmland	
		~2023 fiscal year	2024 fiscal year (Planned)
2,722ha	2,150ha (80.0%)	2,111ha (77.6%)	39ha (1.4%)



Tsunami-damaged drainage pump station and submerged farmland



Farming resumed in Odaka Ward

【Situation of Paddy Rice Cropping Resumption】

In response to the restriction on the paddy rice cropping after the nuclear accident (30 km-radius area), rice cropping was restricted in the entire city area in 2011.

- 2012: Test trial cropping
- 2013: Cultivation demonstration (Outside the areas under evacuation orders)
- 2014: Resumption of crop cultivation

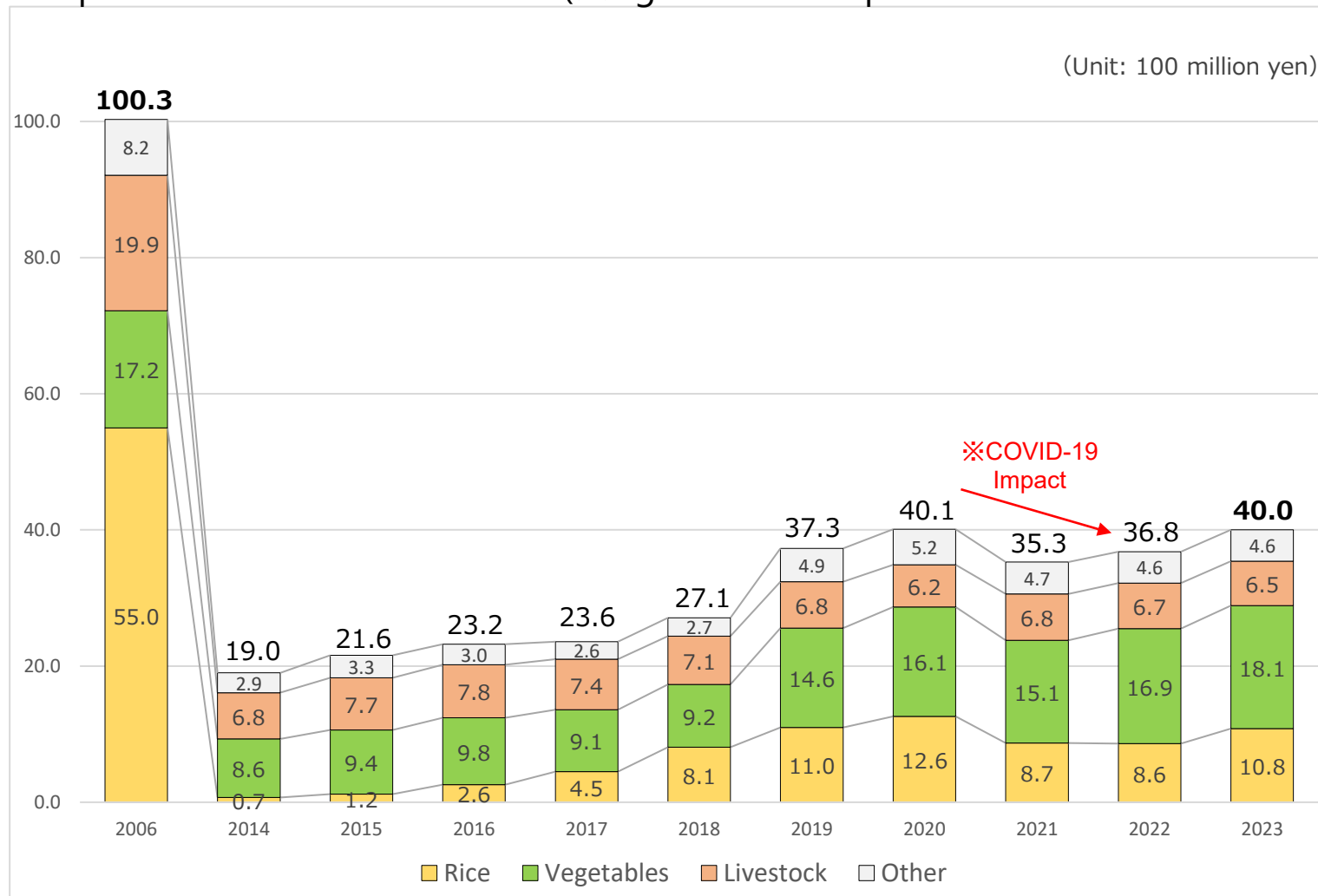
	2010	2011	2012	2013	2014	2015	2016	2017	2018	2019	2020	2021	2022	2023	2024
No. of farmers	3,063	0	109	158	88	236	469	492	482	474	472	467	434	404	384
In Odaka Ward	879	0	3	7	7	7	11	17	17	22	28	34	37	34	35
Rice acreage	5,030	0	15	123	106	729	1,763	2,186	2,523	2,740	3,041	3,236	3,730	3,408	3,644
In Odaka Ward	1,230	0	1	0.9	4	7	5	21	61	102	197	229	328	424	465

(Source: Minamisoma City Restoration Council Paddy Field Ledger)

Current Situation [Primary Industry]

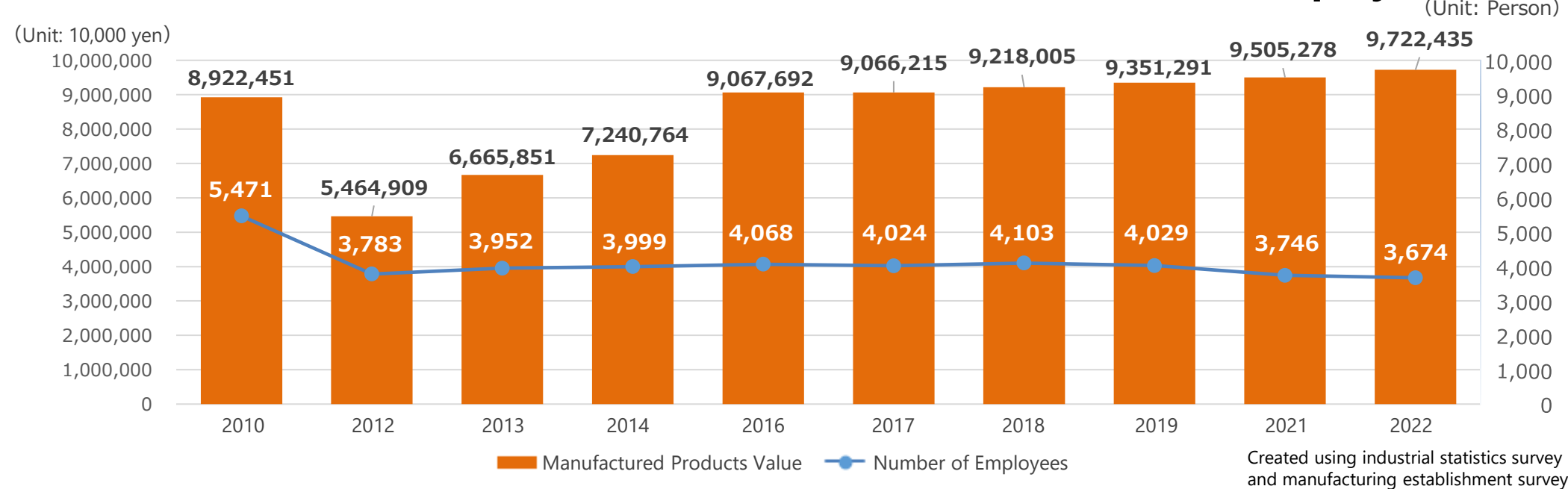
【Amount of Agricultural Output】

The nuclear disaster led to strict limits on the planting of agricultural products and the shipping of agricultural, forestry, and marine products, causing a large drop in agricultural output. Efforts were made to restore field area for planting through agricultural machinery, the installation of facilities and other structures, and the production of garden crops (broccoli, green onions, onions, cucumbers), but output has stopped at 40% of output levels before the disaster. (※Agricultural output in 2021 decreased due to the impact of COVID-19.)



Current Situation [Secondary Industry]

【Shift in Amount of Manufactured Products Value and Number of Employees】



【Establishment of Industrial Parks, etc.】 (As of March 31, 2025)

	Shidazawa Industrial Park	Shimo-Ota Industrial Park	Recovery Industrial Park	Incubation Center
Offer of use opened	2008 F.Y.	2014 F.Y.	2019 F.Y.	2020 F.Y.
Moved-in businesses	7 (4 of which moved in post-disaster)	12	6	15
Lots recruiting	complete	2 lots	2 lots (0.8ha)	1 lot

The amount of shipping of industrial Products fell drastically after the disaster, but briefly overtook pre-disaster levels due to efforts such as reopening business offices, establishing industrial parks, and advancing the initiative to attract enterprises. While devising the coordination between local businesses and start-up companies, “Robot Town Minamisoma” aims for further development centered around robot-related companies. In addition, efforts are being made toward the accumulation of space-related industries, and demonstration experiments by advancing companies are underway.

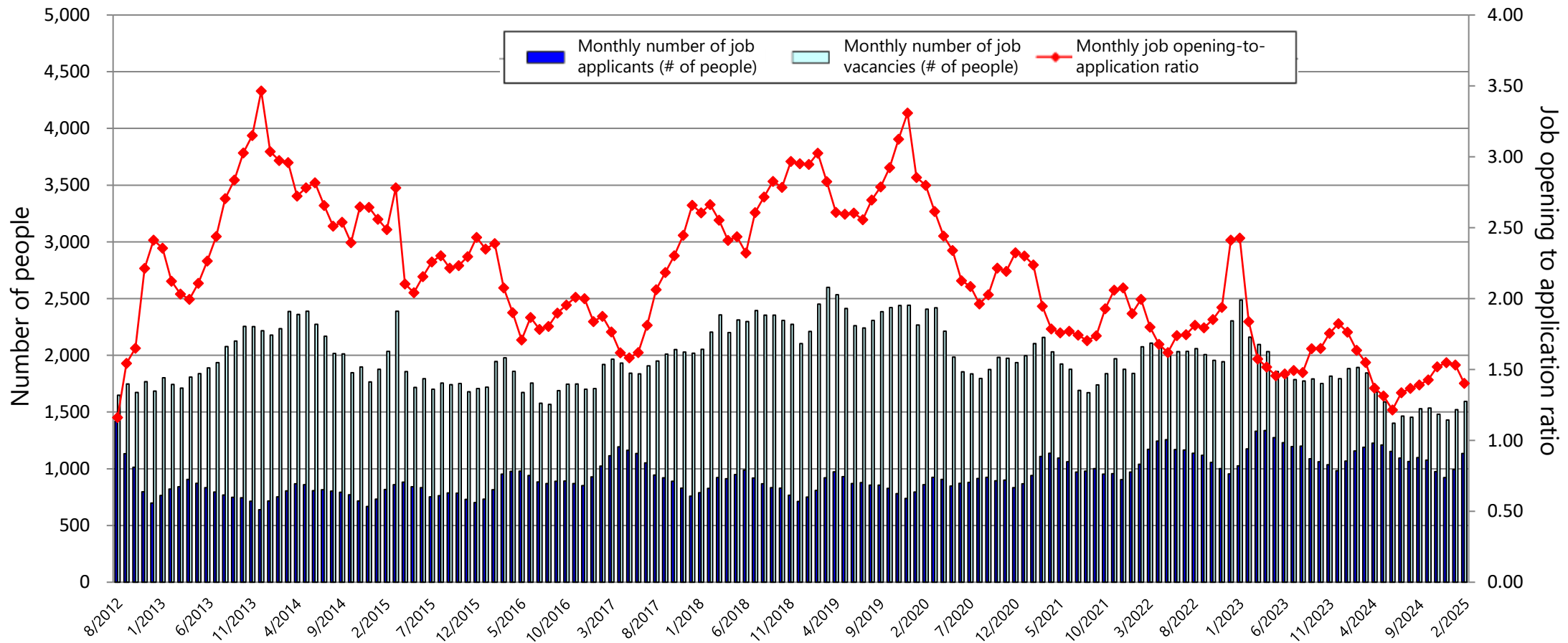


Current Situation [Employment]

【Changes to the Ratio of job Openings to Job Applicants】

• Perspective going forward: The employment situation is slowly improving, but there is a difference in job vacancy trends based on the type of industry, with some industries in dire straits. Going forward, it is important to take note of the effect of rising prices on employment.

◆ Job vacancies exceed applicants in areas such as specialty/engineering (e.g. architecture, civil engineering, nursing, medical technology), marketing (e.g. merchandise marketing, trade), service (e.g. caregiving, customer service), safety (traffic directing), transporting, and construction, while applicants exceed job vacancies in areas such as office work, delivery, and cleaning, displaying a mismatch amongst types of occupation.



Source: Hello Work So-So Investigation (Parts of the above data includes job vacancies in litate Village)

Current Situation [Housing Reconstruction]

【Temporary Housing】

30 locations within Minamisoma, 8 locations outside the city (Soma City, Shinchi Town) Total of 3,300 houses were built

Current residents: 0 (allowance finished at end of March 2020)

※30 locations within Minamisoma demolished

【Mass Relocation】

Housing complexes developed in 11 districts (124 households) in Kashima Ward and 10 districts (180 households) in Haramachi Ward

【Disaster Response Public Housing】

Ward	District	Housing Type	Number of Units	Entry start date
Kashima Ward	Nishikawara	Wooden 1&2F buildings	2DK : 18 / 3DK : 10	Apr. 2014
	Nishimachi	Reinforced concrete 3F	2DK : 15 / 4DK : 15	Oct. 2014
	Nishikawara-2	Reinforced concrete 2F	2DK : 20 / 3DK : 12	Apr. 2016
Haramachi Ward	East Omachi	Reinforced concrete 5F	2DK : 28 / 3DK : 32	Apr. 2015
		Long wooden 1F building	2DK : 20	Apr. 2015
	West Omachi	Reinforced concrete 5F	2DK : 20 / 3DK : 20	Apr. 2015
	South Omachi	Reinforced concrete 3&5F	2DK : 17 / 3DK : 12	Apr. 2016
	Kaibama	Steel 1F/wooden 2F	2DK : 28 / 3DK : 10	Apr. 2016
	Sakaecho	Steel 3F	2DK : 21 / 3DK : 12	Apr. 2016
Odaka Ward	Higashimachi	Wood 1&2F	2DK : 14 / 3DK : 6	Jul. 2016
	Mangasaku	Long wooden 1F building	3DK : 2	Jul. 2016
	Kamimachi	Long wooden 1&2F	2DK : 8 / 3DK : 10	Jul. 2016

【Reconstruction Public Housing】

Ward	District	Housing Type	Number of Units	Progress
Kashima Ward	Nishimachi	Wood	50	Complete
Haramachi Ward	Kitahara	Reinforced Concrete	264	Complete
	Kamimachi	Reinforced Concrete	182	Complete
	Ushigoe	Reinforced Concrete	179	Complete
	Minamimachi	Reinforced Concrete	255	Complete
Total			927	



Mass relocation site (Ogawa-cho)



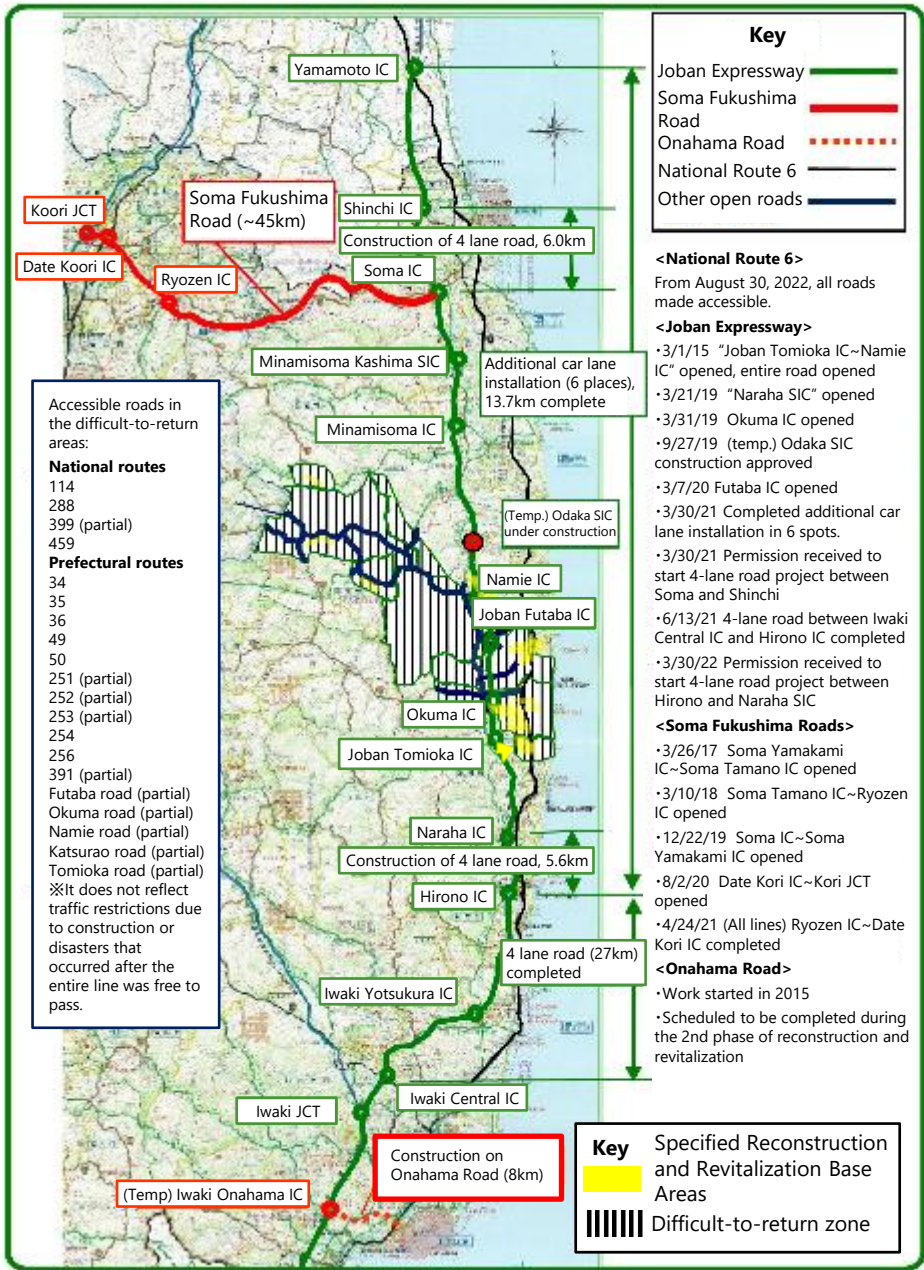
Disaster response public housing (East Omachi)



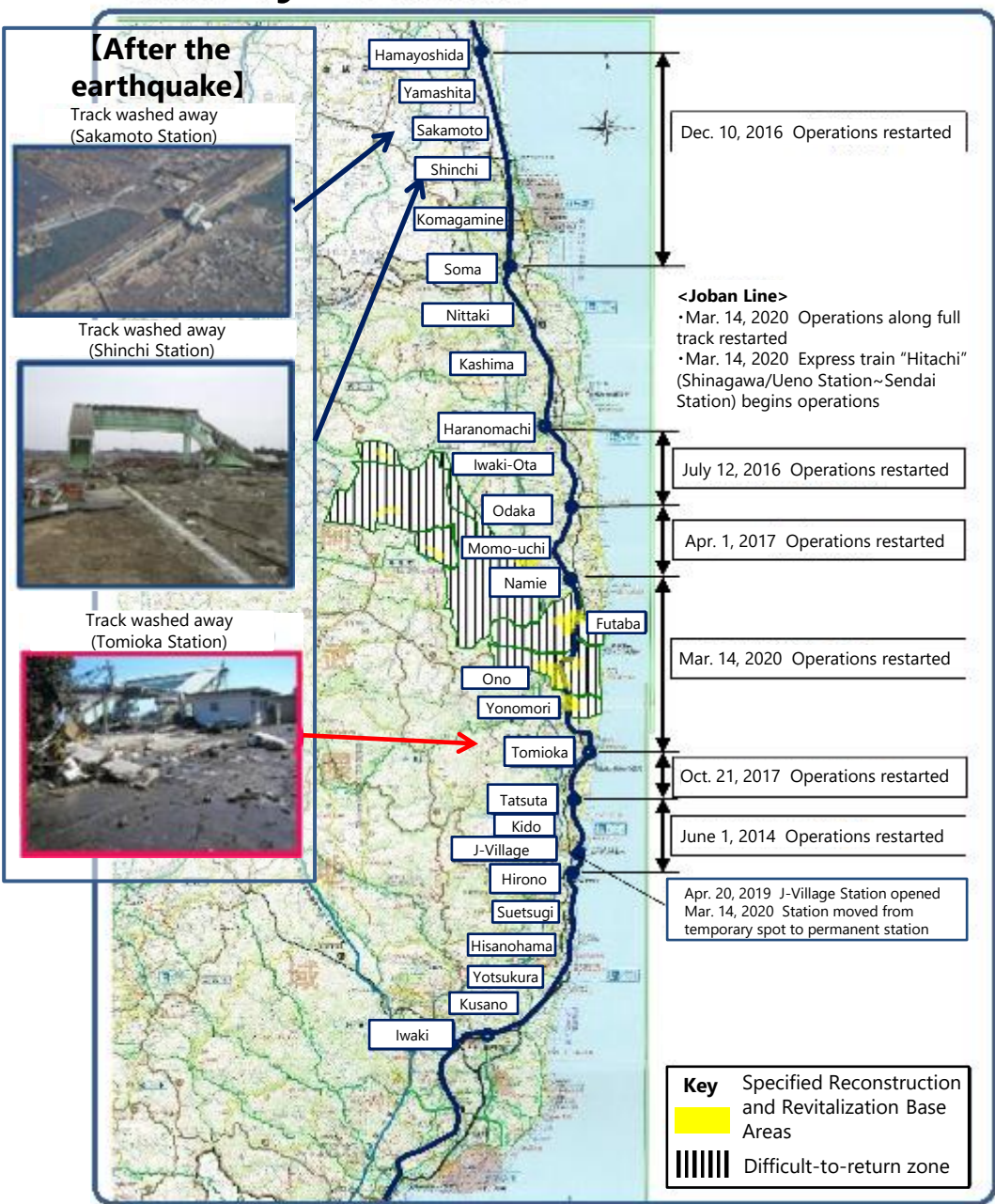
Prefectural reconstruction public housing

Current Situation [Infrastructure Reconstruction]

Roads



Railway (JR Joban Line)



Promotion of Minamisoma's Third Comprehensive Plan

In Formulation

Feelings of Hope and Excitement

In the face of unprecedented circumstances, Minamisoma's strength comes from its ability to take on and accomplish both recovery efforts and new endeavors with a sense of simple honesty and flexibility.

"What should we do, what can we do right now for the sake of our irreplaceable future?"

Asking this question, let's work together to give shape to all of our hopes and dreams, one by one.

Mayor of Minamisoma
Monma Kazuo



Purpose of Formulation

Minamisoma's Third Comprehensive Plan was formulated in March, 2023 in order to respond swiftly and flexibly to the new challenges associated with the progress in reconstruction from the earthquake and nuclear accident, and the rapidly changing social conditions of recent years.

Composition and Duration

The Comprehensive Plan is the city's major plan that shows the direction and measures that Minamisoma aims for through a "basic concept" and "basic plan".

Establishing a basic concept to define the fundamental measure directions.

- Policies (7 "Policy Pillars" (basic policies and measures))

Basic Concept

8 Years

2023 to 2030

Basic Plan

4 Years

【Early Term】 2023 to 2026

【Late Term】 2027 to 2030

Defining the town the city aims for.

- Basic Concept of Community Development (basic goals of community development, basic attitudes and policies for community development in the next eight years (seven "policy pillars"))
- Basic Concept of Land Usage (basic principle of land usage/basic policy of land usage)

Promotion of Minamisoma's Third Comprehensive Plan

The Future We Aim For

The basic goal of city development: "The Shape of Future Minamisoma"

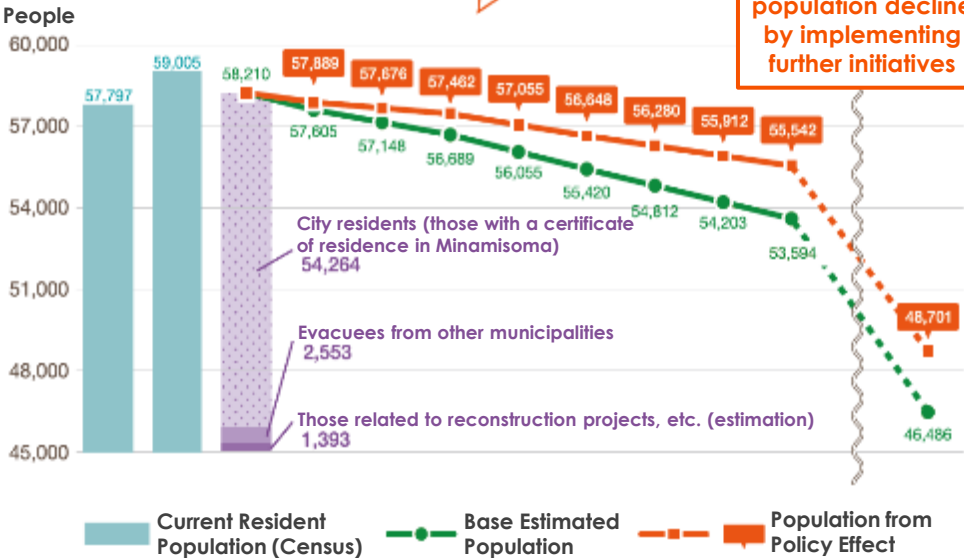
100-Year City Development
To continue living with our
family and friends

Minamisoma City 100 Years Ahead
～ 「A town where you can live with peace of
mind while surrounded by friends and family」 ～

Target Population After 8 Years

Population Trends and Estimates

Restraining
population decline
by implementing
further initiatives



Basic Stances for Community Development Over the Next 8 Years

With its eyes set on the realization of "100-Year City Development," the city aims to enable citizens to have a real feeling of recovery from the earthquake and nuclear accident over the next 8 years between 2023 and 2030.

In order to achieve this goal, we are advocating the following three basic stances in order to promote community development through cooperation among citizens, businesses, community development groups, and the government.

Connect

It has been 16 years* since our city's merger, and 12 years* after the earthquake and nuclear accident. We cherish this city's journey and give shape to the results of all the effort we have made so far, thus firmly **connect** them to the next generation. Through this, we aim for sustainable town development.

Coexist

We are aiming for development of a town where hopes and dreams can be realized by understanding, respecting, and **coexisting** with each other and the various views of life, values, and customs that have arisen over the course of the city's recovery and reconstruction.

Challenge

We aim to develop a city that can continue to move forward into the future by having unconventional and flexible ideas, seeing various difficulties as opportunities to make a leap forward, and boldly taking on new **challenges**.



*These numbers are based on when the basic concept was formulated in December 2022.

Overall Plan

Basic Concept: 8 Years (2023-2030F.Y.)

Basic Early Term Plan:
4 years (2023-2026F.Y.)

1. Basic Concept of City Development

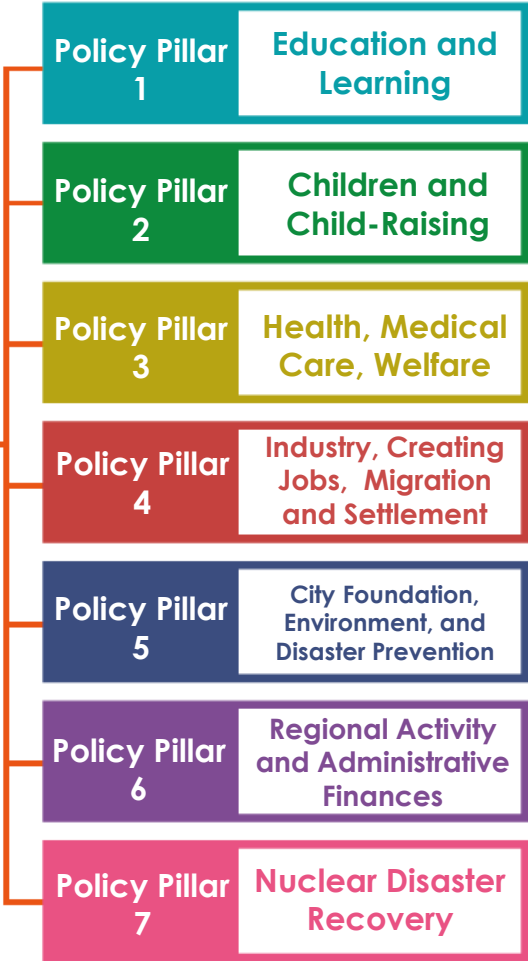
[1] The Basic Goal of City Development:
"The Shape of Future Minamisoma"

100-Year City Development
~ A town to live in
with family and friends ~

[2] Basic Stances on City
Development Over the
Next 8 Years



[3] Policies: 7 Policy Pillars



[4] 17 Basic Measures



【Policy Pillar 1】 Education and Learning

Policy Pillar 1

Education and Learning

We aim to create a city where everyone can continue to learn what they want to learn, while increasing the ability of children to open up the future by improving the educational standard.

Basic Measures	Measures
1. School Education	<ul style="list-style-type: none">① Nurturing a rich mind and body② Improvement of educational standards③ Improvement of educational environment④ Enhancement of support according to the child/student's situation
2. Lifelong Learning	<ul style="list-style-type: none">⑤ Enhancement of lifelong learning⑥ Enrichment of art and culture⑦ Promotion of societal measures such as gender equality



Main Efforts in 2025

Cont. **Overseas Study Tours for Junior High School Students** 30,700,000 Yen

We will develop students with broad perspectives through overseas studies that expose them to foreign cultures. Australia and Singapore are both nations with multicultural societies where different people groups understand and respect each other's cultures, cultivating a harmonious society. Students will experience this first-hand locally, developing a national spirit regarding the importance of respecting differences and diversity compared to Japan.



Cont. **International Baccalaureate Education Project** 6,590,000 Yen

To cultivate children who have the qualities and abilities to thrive in the future and with plans to elevate the quality of education, we are moving forward with implementation of International Baccalaureate Education. In observing the elementary school where implementation has begun, seeing students who "think for themselves and discuss challenges without easy solutions" was impressive.

New **Dinosaur Fossil Search Survey - Expanding Education Project** 840,000 Yen

We want it to be known that nationally representative dinosaur era fossils are distributed in the Somanakamura formation in the area around Sedette Kashima. Continuing research and investigation activities are being carried out by local associations. Various fossils from the beginning from Jurassic Period until the Cretaceous Period (dinosaur footprints, ammonites, plants thought to have been eaten by dinosaurs, etc.) have been discovered and gained attention on the world stage as important achievements. We will not only make these achievements available to the wider public, but also carry the dreams of citizens from children to adults by advancing research and experiential excavation activities related to this geological layer and by moving toward new discoveries.



Policy Pillar 2

Children and Child-Raising

Along with aiming for a town that protects the rights and livelihoods of all children and allows them to live happily, we are taking steps such as countermeasures against the declining birthrate in order to create a town where people can give birth to children with peace of mind, feel joy in their growth, and give them a fulfilling childhood.

Basic Measures	Measures
3. Children / Child-Raising	⑧ Support for marriage, pregnancy, and childbirth
	⑨ Enhancement and quality improvement of childcare and early childhood education
	⑩ Enhancement of child-rearing environments
	⑪ Support for the healthy growth of children



Main Efforts in 2025

Cont.

Sick Childcare Subsidy

12,820,000 Yen

From June of 2024, the long-awaited childcare for sick and recovering children has begun. We've implemented the "nikoniko" childcare room inside Haramachi Smile Clinic. Children from 6 months to 6th grade who have an address in the city are eligible.

Cont.

Hugpapa - Paternity Leave Facilitation Subsidy

21,380,000 Yen

We have provided a subsidy to facilitate father's participation in child-rearing and male employees obtaining paternity leave.

<Participant's Voice>

"The city subsidy helped me obtain paternity leave. My workplace has a small number of employees who work in rotating shifts, but my supervisor and coworkers were supportive and understanding."
- Father in his 20s

"Because Papa helped with the housework and childrearing, I was able to spend the unstable time after childbirth enjoyably."
- Mother in her 30s



3 for Free

Free 1

● Free School Lunches from Pre-K to Junior High School ●

Cont.

Free School Lunches from Pre-K to Junior High School

228,820,000 Yen

Free 2

● Free Childcare Costs for Preschools and Kindergartens ●

Cont.

Free Childcare Project

49,050,000 Yen

Free 3

● Free Medical Care for Children up to 18 Years Old ●

Cont.

Infant/Child Medical Care Subsidy Project

115,060,000 Yen





Policy Pillar 3

Health, Medical Care, Welfare

We aim to create a city where everyone can live a safe and healthy life by promoting the health of citizens, improving the medical and welfare systems, and strengthening cooperation between them.

Basic Measures	Measures
4. Health & Sports	⑫ Promotion of disease prevention
	⑬ Promotion of projects for physical and mental health
	⑭ Alleviation of health concerns about radiation
	⑮ Promotion of sports for all generations
5. Medical Care	⑯ Maintenance and strengthening of the regional medical care provision system
	⑰ Promotion of regional comprehensive medical care and nursing service provision system
6. Welfare	⑱ Improvement of community welfare
	⑲ Improvement of frailty prevention and welfare for the elderly
	⑳ Improvement of welfare for people with disabilities (including children)

Main Efforts in 2025

Cont.

Sports Training Camp Support Project Subsidy

10,200,000 Yen

In order to expand the population engaging in exchanges through sports and revitalize the region, we will provide subsidies to sports organizations conducting training camps using the city's sports and lodging facilities.



Expand

Metabolism Syndrome Strategy Project

19,970,000 Yen

We will promote health through health initiatives connecting citizens, offices, and organizations by introducing a health point app as part of our plan to expand health activities and improve health awareness. "Walking" will be one pillar of strategy against metabolic syndrome. "Walking is the best medicine." (Hippocrates, ancient Greek physician known as the Father of Medicine)

Cont.

Endowment Course Establishment Project

140,740,000 Yen

We will support the establishment of research courses at medical universities and aim to enhance medical support by receiving doctors from research courses to Minamisoma Municipal General Hospital, etc.



Expand

Promotion of Dementia Countermeasures (Including Nursing Care Insurance Special Accounts)

27,570,000 Yen

Perceiving dementia as the city's issue, we will know, provide for, and increase awareness of living together with dementia, so that those who have dementia can live with peace of mind and realize active and happy lives living together with everyone and supporting each other. This is our aim in promoting dementia countermeasures.

Let's aim for healthy lifestyle habits

Sun Sun CHALLENGE



minamisoma



Policy Pillar 4

Industry, Creating Jobs, Migration & Settlement

As a city that supports the development of local businesses and supports new challenges, we aim to create a city that people want to visit and live in by making the most of the city's attractive local resources.

Basic Measures	Measures
7. Agriculture, Forestry, and Fisheries	<ul style="list-style-type: none">21 Securing and cultivation of workers, and development of an efficient production base22 Promotion of distribution and sales that create strategic production and demand23 Creation of energized and attractive farming, mountain, and fishing villages
8. Commerce and Industry	<ul style="list-style-type: none">24 Creation and nurturing of new industries in one of the Innovation Coast Prioritized Fields* such as robots and drones25 Promotion of city businesses26 Securing a diverse village and enhancing employment support27 Urban revitalization that supports new challenges
9. Tourism Exchange	<ul style="list-style-type: none">28 Promotion of year-round tourism29 Promotion of equestrian culture and tourism30 Expansion of exchange population
10. Migration & Settlement	<ul style="list-style-type: none">31 Enhancement of immigration promotion and settlement support

***Innovation Coast Prioritized Fields**
Fukushima Innovation Coast Initiative's six prioritized fields are "decommissioning", "robots/drones", "energy/environment/recycling", "agriculture, forestry, and fisheries", "medical", and "aerospace."

Main Efforts in 2025

New Space-Related Industry Promotion Project 23,110,000 Yen

In order to promote the creation and cultivation of new industries in key innovation areas that our city aims for, we will accelerate the ongoing efforts in the space-related industry in our city while fostering understanding among residents, and we will promote various measures in collaboration with relevant organizations. Last year three rocket launch demonstrations by private sector operators were conducted in our city. In Hansaki Industrial Park, factory facilities for rocket companies is progressing. In addition, the assembly of artificial satellites has begun within the city. From April we started a new program at Hama Technical Academy on human resource development for the aerospace industry.



Cont. Horticultural Crops Aggregation and Distributing Complex Development Project 4,175,150,000 Yen

We will develop a distribution location to provide a processing facility for distribution that adds value to high quality products. We plan to improve recognition of local products as we provide consumers inside and outside of the city with rich eating habits, while also advancing farmer's income and their production environment and production ambitions .



Cont. Surf Town PR Project 35,090,000 Yen

We will improve Kitaizumi Beach's image as a surfing spot of increasing recognition through publishing information on surfing-related media and the website "Evnamiki-taizumi." Also, the photo spot established in 2024 has received positive reviews and been registered on many people's social media. Furthermore, during the beach season, we ran surfing experiences and had food trucks operating every weekend, and with an adjacent campground, Kitaizumi beach has become and fun spot to enjoy not only "sea," but also "fun" and "food."



Policy Pillar 5

City Foundation, Environment, and Disaster Prevention

We aim to create a comfortable, environmentally friendly city by improving the road network, water supply and sewerage systems, securing public transportation, reducing waste, implementing a decarbonized society, and promoting traffic safety and crime prevention. Furthermore, we aim to create a safe and secure city by building flexible and resilient local communities that can take on unexpected disasters.

Basic Measures	Measures
11. City Foundation	<ul style="list-style-type: none">32 Road network maintenance33 Promotion of rainwater drainage measures34 Maintenance of water supply and sewage35 Improvement of living environment36 Securing public transportation
12. Living Environment	<ul style="list-style-type: none">37 Promoting waste reduction and recycling38 Environmental conservation39 Energy utilization aiming for a decarbonized society
13. Regional Disaster Prevention	<ul style="list-style-type: none">40 Strengthening the disaster prevention systems41 Strengthening firefighting capabilities
14. Traffic Safety & Crime Prevention	<ul style="list-style-type: none">42 Promotion of traffic safety43 Promotion of crime prevention44 Enhancement of citizen consultation system

Main Efforts in 2025

Cont. Fixed Rate Taxi Project

95,630,000 Yen

We will implement a service that supports the lifestyle of citizens who find it inconvenient to use public transportation, such as buses, by securing highly convenient means of necessary transportation. Users have expressed that, despite needing to visit multiple hospitals, they are able to receive necessary treatments through this program.



Cont. Roof Solar Panels Installation Expansion Project Assistance Subsidy

77,350,000 Yen

We will provide assistance subsidies to citizens and businesses in the city that install rooftop-based self-consumption solar panels. By combining solar panels and storage batteries, in addition to reducing electricity costs, it can be utilized as an emergency power source during disasters and power outages.



Cont. Garbage Reduction • Recycling Subsidy Project

5,050,000 Yen

To promote the reduction of household waste as well as reusing resources through recycling, we will provide rewards to groups and those who collect recyclable waste and those who have installed compost containers.





Policy Pillar 6

Regional Activity and Administrative Finances

In addition to revitalizing and rebuilding local communities, we will support each citizen so they can grow and play an active role as a leader in community development. We will also respond flexibly to sudden events and unforeseen circumstances. Furthermore, we will plan sound administrative and financial management and aim for creating a town that can continue long into the future.

Basic Measures	Measures
15. Community & Citizen Participation	④5 Rebuilding and revitalizing local communities
	④6 Promoting cooperation with NPO's and citizen groups
	④7 Promotion of information dissemination and public relations
	④8 Effective administration
16. Administrative Finances	④9 Promotion of digital transformation (DX※)
	⑤0 Optimization and utilization of public property holdings
	⑤1 Sound financial management

Main Efforts in 2025

Cont. New City Hall Building Project

113,690,000 Yen

We will establish a new government building in order to enhance citizen services by aggregating scattered service counters and installing barrier-free access and universal design, while also strengthening its functions as facility for disaster response.



Expand

Promoting Digital Transformation (DX) in Local Government

36,110,000 Yen

We will promote the use of digital technology, AI, etc., as well as review administrative processes to strive for operational efficiency, reduce worker burden, and improve government services.



Cont. Issuance of All Kinds of Certificates at Convenience Stores Project

18,240,000 Yen

If you have a My Number Card, citizens can obtain their Residence Certificate and other certificates at the multifunction copier in convenience stores. You can obtain certificates "more economically" and "in a shorter time" that at the city hall counter, so, if you have a My Number Card, please make sure to use the convenience store issuance.

【Policy Pillar 7】 Nuclear Disaster Recovery



Policy Pillar 7

Nuclear Disaster Recovery

We will promote the Fukushima Innovation Coast Initiative in close cooperation with the national and prefectural governments. Going forward, we will take further measures against the declining birthrate, promote immigration and settlement, and secure human resources in the medical and welfare fields, which are in short supply. Furthermore, we will promote efforts to dispel harmful rumors and aim for recovery and revitalization from the nuclear disaster by requesting the government and operators to proceed with the decommissioning of nuclear reactors safely and steadily.

Basic Measures	Measures
17. Nuclear Disaster Recovery	<ul style="list-style-type: none">Reconstruction and revitalization of former evacuation order zoneSupport for victims of the Great East Japan Earthquake and nuclear accidentEnvironmental recoveryMeasures from Policy Pillar 1 to Policy Pillar 6 (repeated)

Main Efforts in 2025

Cont. Creating Odaka-Life Fans

46,640,000 Yen

Through informational presentations and migration experience tours centered on Odaka Ward, we will promote migration and settlement while building attachment to the area. The website “Odakaru,” introduces the honest lives of “Odakaru” people who enjoy their work and play freely and authentically in the Odaka area. There are many new things to discover, even for locals. Please be sure to check out the website.

Cont. Odaka Ward Urban Revitalization Project

67,560,000 Yen

We are holding various projects aimed at different generations and areas, as well as activities for exchange between local residents and newcomers, with the goal of creating vibrancy and revitalizing the community.

New Agricultural Land Conservation Management for Reopening Agricultural Operations Subsidy

8,790,000 Yen

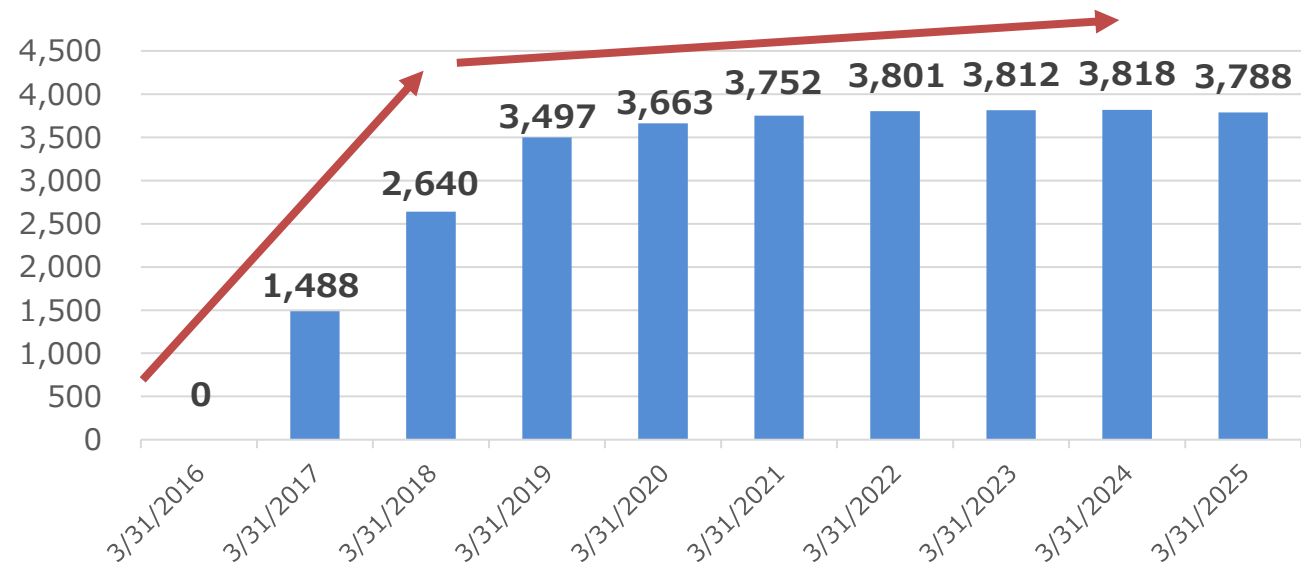
To promote the smooth resumption of agriculture unavoidable halted in evacuated regions due of the Great East Japan Earthquake, we will provide operational subsidies to the agricultural recovery associations that are carrying out land preservation management as part of preparations to resume farming.



Efforts to Revitalize Zone Formerly Under Evacuation Orders

(Situation in Odaka Ward)

【Residential Population Trends in Odaka Ward】



○ In order to improve the living environment of returnees, the city has been developing public and private supermarkets, the Odaka Store, certified childcare centers, children's playgrounds, and other facilities. The number of returnees has leveled off, despite the implementation of projects to promote the return of evacuees, such as holding consultation meetings for evacuees from outside the city in cooperation with local governments.

○ Mid-to-long-term measures are still required in order to recover from the nuclear disaster.

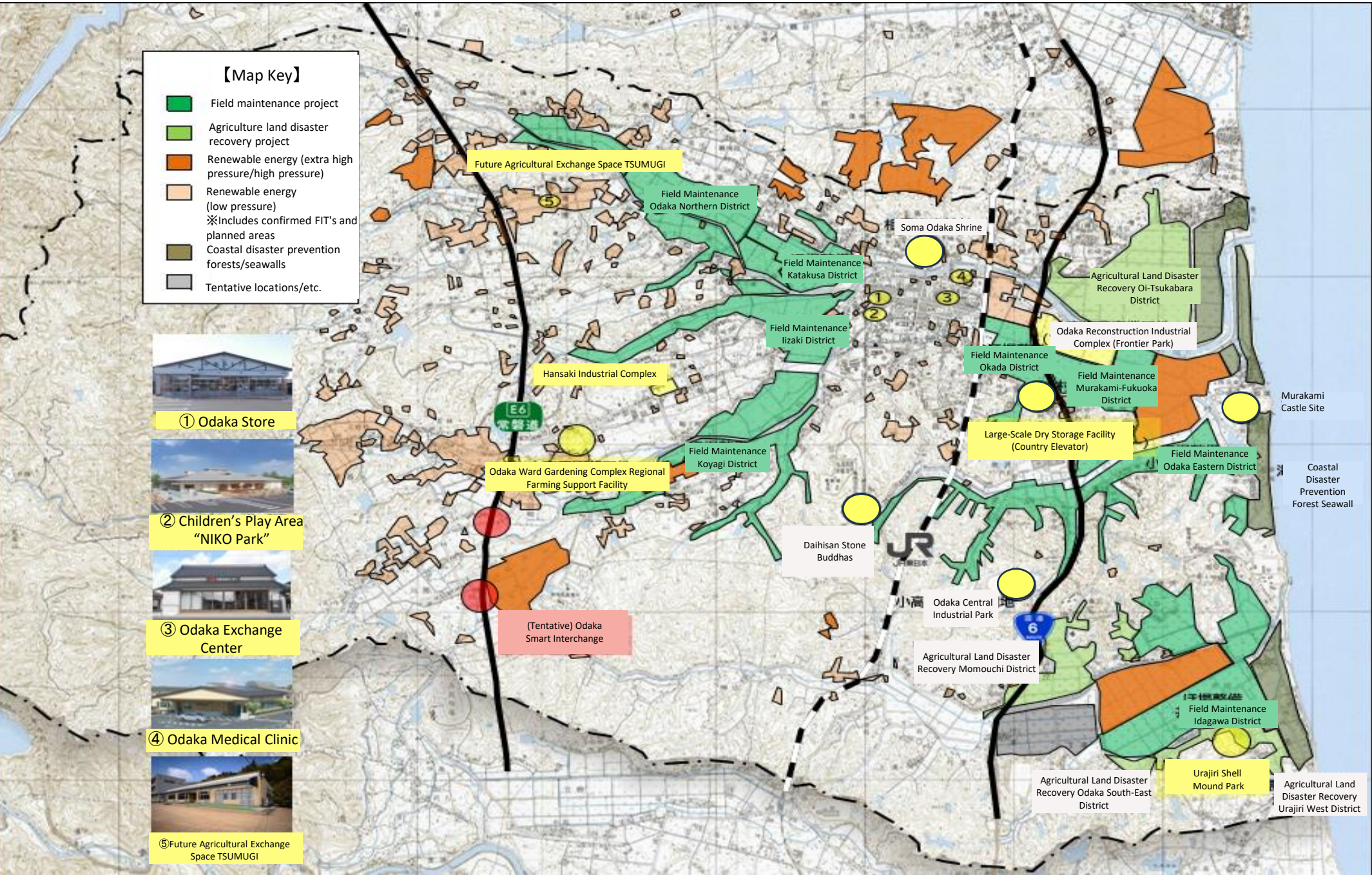
【Status of Maintenance of Major Facilities in Odaka Ward】

	Events
July 12, 2016	Restricted Residence Zone and Preparation Area for Lift of Evacuation Orders lifted JR Joban line between Haranomachi Station and Odaka station resumes operation for first time in 5 years
April 1, 2017	Odaka ES and Odaka JHS reopen
December 6, 2018	Opening of Odaka Store
January 26, 2019	Reconstruction Base Facility Odaka Exchange Center opens
April 1, 2020	Odaka Certified Childcare Center reopens
April 3, 2021	Children's Playground NIKO Park opens
December 16, 2021	Odaka Medical Clinic opens
April 11, 2024	Future Agricultural Exchange Space TSUMUGI opens, Future Agricultural School opens



Efforts to Revitalize Zone Under Former Evacuation Orders

(Land Usage Situation)



Efforts to Revitalize Zone Under Former Evacuation Orders (Issues in Odaka Ward)

The population has only recovered to about 30% of its pre-earthquake levels, and the proportion of elderly returnees is high. This drastic deviation in the composition of the population has led to many problems.

【Community】

- **Reorganization of administrative districts**
- **Difficulties maintaining local organizations**
Ratio where the proportion of elderly people (65 and older) exceeds half: Approx. 54%
※21 administrative districts out of a total of 39 administrative districts (As of March 2025)
- **Lack of interaction between residents from before and new immigrants**

【Land Management】

- **Utilization of vacant houses and lots**
Total number of vacant houses and lots registered in Odaka : 243
Total number of contracts : 71 Contract rate approx. 29%
(Haramachi Ward: approx. 34%) (As of March 2025)
- **Overcrowding of solar panels**
Locations of approved solar-power generation business plans per 1km²
Odaka Ward: 35 Fukushima Prefecture: 2.26 (As of March 2025)
- **Rate of resumption of rice cultivation**
About 30% in Odaka Ward
(Kashima Ward: 90%, Haramachi Ward: 70%) (2024 fiscal year)

【Living Environment】

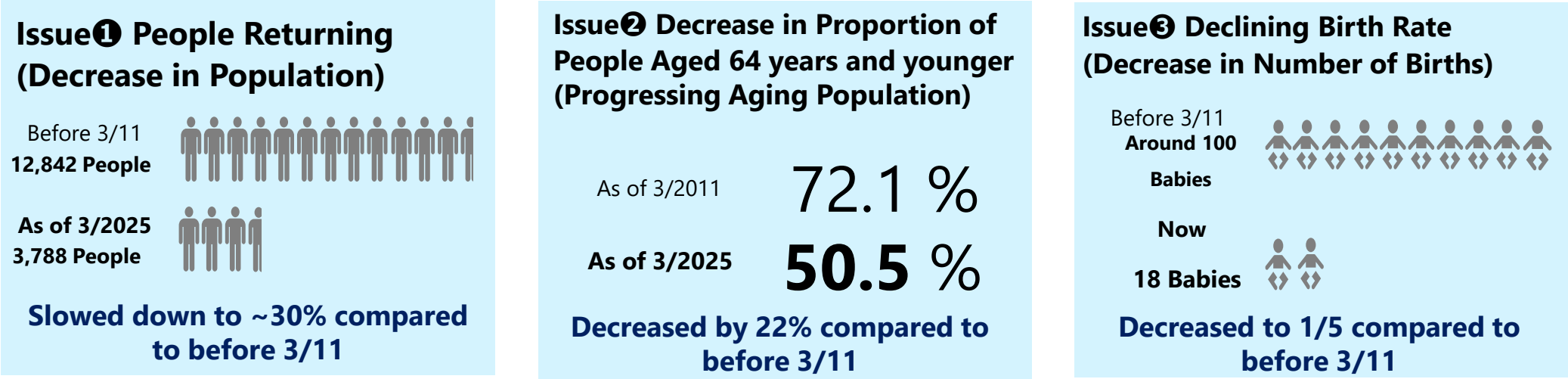
- **Decrease in commercial facilities**
Odaka Society of Commerce and Industry membership resumption rate: roughly 66.9% (As of March 2025)
- **Frequent occurrence of harmful wildlife damage (within the city area)**
Cases of capturing harmful wildlife 2010F.Y.: 188 ⇒ 2024F.Y.: 2,415
- **Illegal dumping of garbage**
It has become difficult to keep an eye on the area, and garbage is being illegally dumped, mainly along the main roads

【Child-Rearing, Education, and Medical Care】

- **Decrease of a younger population**
Percentage of elderly population:
March 11, 2011: ~28% ⇒ End of March 2025: ~50%
- **Shortage of medical facilities**
Number of medical facilities (including dental clinics)
Before 3/11: 12 facilities ⇒ End of March 2025: 5 facilities
- **Creating an environment that is easy to raise children in**
There are no pediatricians/OBGYNs.
There are few areas in the local vicinity where you can attend cram school and other lessons.

Efforts to Revitalize Zone Under Former Evacuation Orders (Response to Issues)

【Current Situation and Issues for the Future of Odaka Ward】



○In order to solve these problems, while continuing to promote repatriation, we will promote two initiatives to attract new energy.



Efforts to Revitalize Zone Under Former Evacuation Orders (Response to Issues)

■ Urban Development through Promoting the Fukushima Innovation Coast Framework

Creating and revitalizing industries and creating employment opportunities by creating new industries and guiding them to the city, and attracting related companies through the development of industrial parks in order to attract new energy and vitality to the area.

● About the Fukushima Innovation Coast Framework

The Fukushima Innovation Coast Framework is a national project that aims to build a new industrial base in order to revive industries in the Hamadori area. The city is working to materialize projects, particularly those in the fields of decommissioning, robots/drones, energy/environment/recycling, agriculture, forestry and fisheries, medical care, and aerospace.



Decommissioning of Nuclear Reactors

Technological development that combines national and international wisdom



Robots/Drones

Accumulating a robot industry centered around the Fukushima Robot Test Field



Energy, Environment, and Recycling

Move toward the establishment of cutting-edge renewable energy and recycling technology



Agriculture, Forestry, and Fisheries

Revitalization of agriculture, forestry, and fisheries using ICT and robot technology



Medical Industry

Developing corporate sales channels through technology development support



Aerospace

Substantiation of "flying cars" and attracting related companies

【Considered Major Efforts to Promote the Innovative Concept by the City】

- Guidance of human resources related to the Fukushima Innovation Coast Framework
- Attraction of companies, factories, etc., by developing industrial parks
- Collaboration with Fukushima Institute for Research, Education and Innovation (F-REI), etc. for industrial development
- Collaboration with universities and related organizations for human resource development
- Urban development using the Fukushima Innovation Coast Framework, etc.



Image of Community Development in Odaka Ward

Efforts to Revitalize Zone Under Former Evacuation Orders

(Response to Issues)

■ Community Development by Promoting Migration and Settlement

Strengthen cooperation with related organizations, etc., strengthen information dissemination, conduct socializing activities, expand various support systems, etc., to support work, housing, and integration into the community, and attract new energy and vitality needed in the community.

Flow of Migration and Settlement in Odaka Ward (Image)

